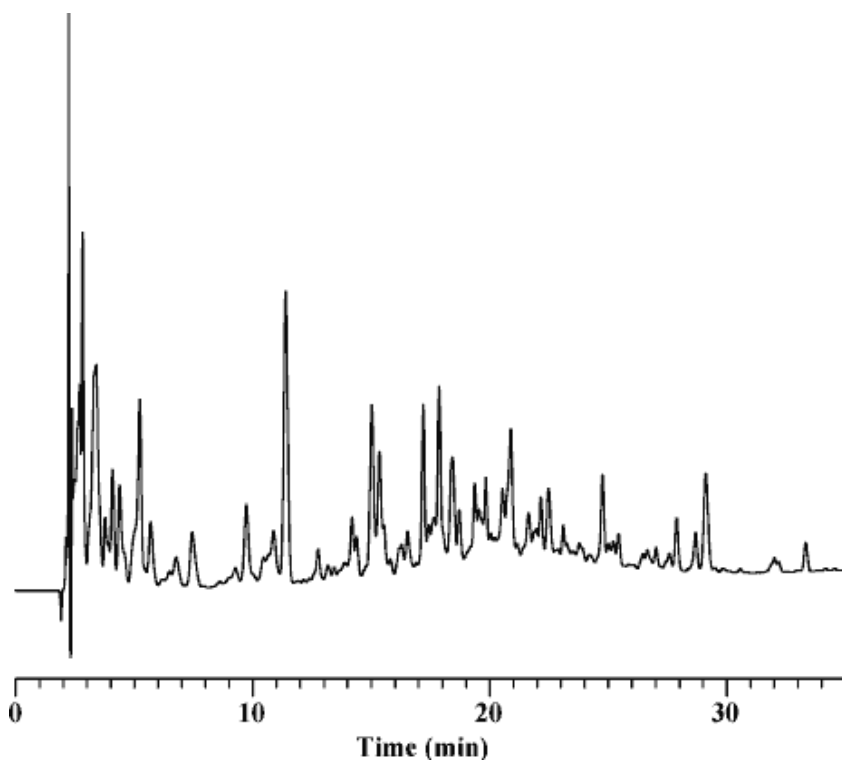


Tryptic Digest of BSA



Column	: Inertsil WP300 C8 5 μ m 150 \times 4.6 mm I.D.	Solutes	: Tryptic Digest of BSA (5 mg/mL, 37°C, 24 h)
Column Cat. No.	: 5020-05745		
Eluent	: A) 0.1 % TFA in CH ₃ CN/H ₂ O = 2/98 B) 0.1 % TFA in CH ₃ CN/H ₂ O = 90/10 A/B = 90/10 - 5 min. - 90/10 - 50 min. - 40/60		
Flow rate	: 1.0 mL/min.		
Col. Temp.	: 30°C		
Detection	: UV 214 nm		
Injection Vol.	:		
Sample	: Tryptic Digest of BSA		