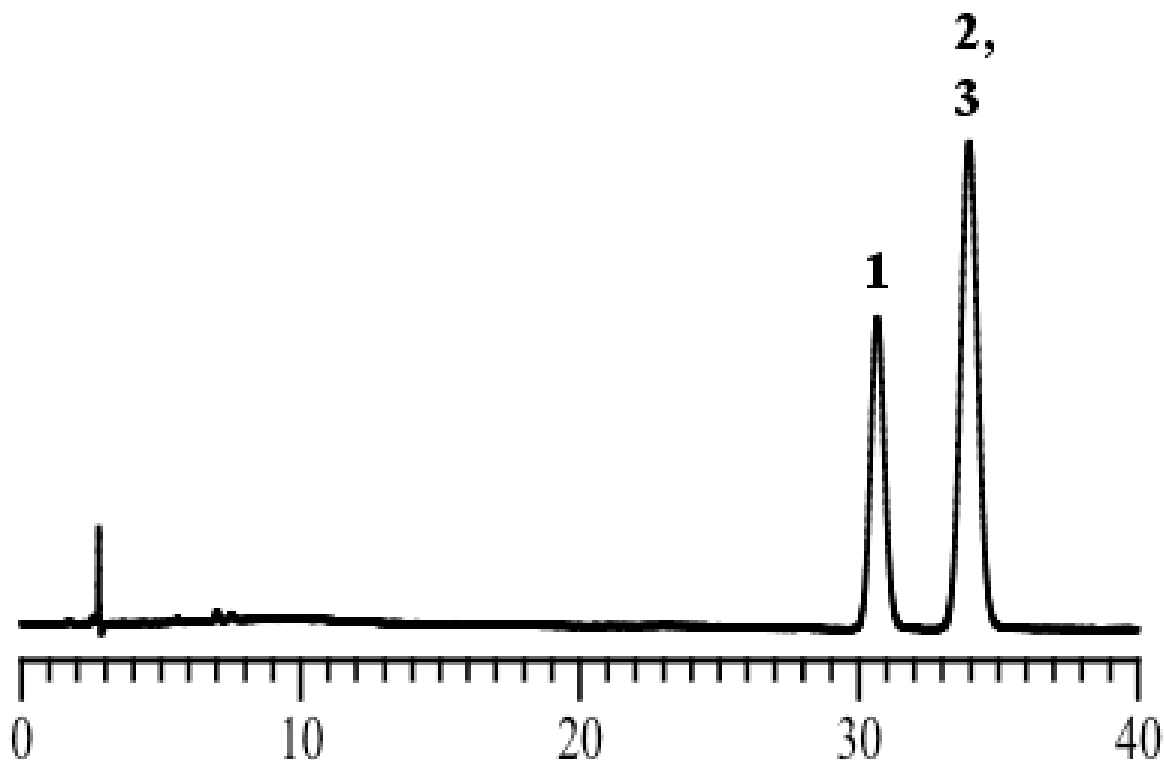


Analysis of Xylene Isomers



Column : Inertsil ODS-3
 5 μ m
 250 x 4.6 mm I.D.

Solutes : 1. o-Xylene
 2. m-Xylene
 3. p-Xylene

Column Cat. No. : 5020-01732

Eluent : A) Ethanol
 B) β - Cyclodextrin/H₂O = 5/995, v/v
 A/B = 50/50, v/v

Flow rate : 1.0 mL/min.

Col. Temp. : 40°C

Detection : UV 254 nm

Injection Vol. :

Sample :