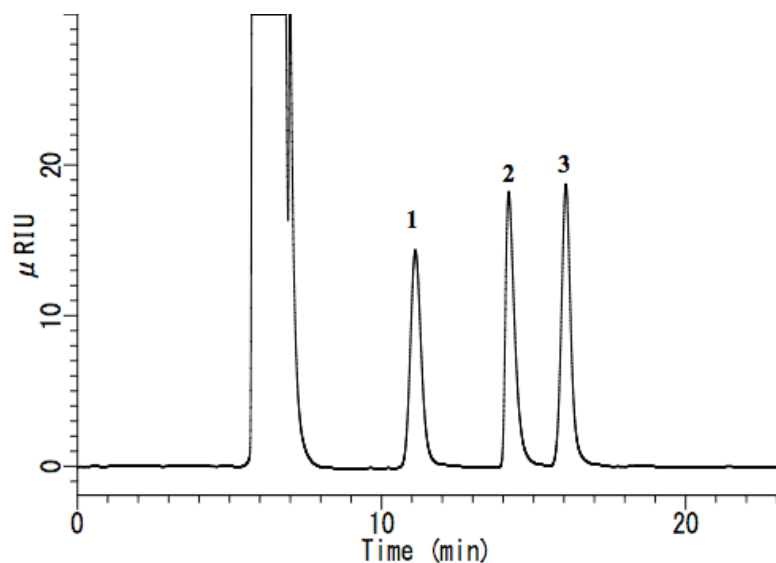


## Analysis of food additives



**System** : GL-7400 system  
**Column** : Inertsil NH2 (5 $\mu$ m, 250 $\times$ 4.6 mm I.D.)  
**Column Cat. No.** :  
**Eluent** : A) CH<sub>3</sub>CN  
           B) H<sub>2</sub>O  
           A/B = 65/35, v/v  
**Flow rate** : 0.5 mL/min  
**Col. Temp.** : 40 °C  
**Detection** : RI (GL-7454 RI detector)  
**Injection Vol.** : 10  $\mu$  L  
**Sample** : N-Acetyl-D-Glucosamine, Betaine, myo-Inositol

**Solutes** : 1. N-Acetyl-D-Glucosamine ( 2000 mg/L )  
           2. Betaine ( 2000 mg/L )  
           3. myo-Inositol( 2000 mg/L )