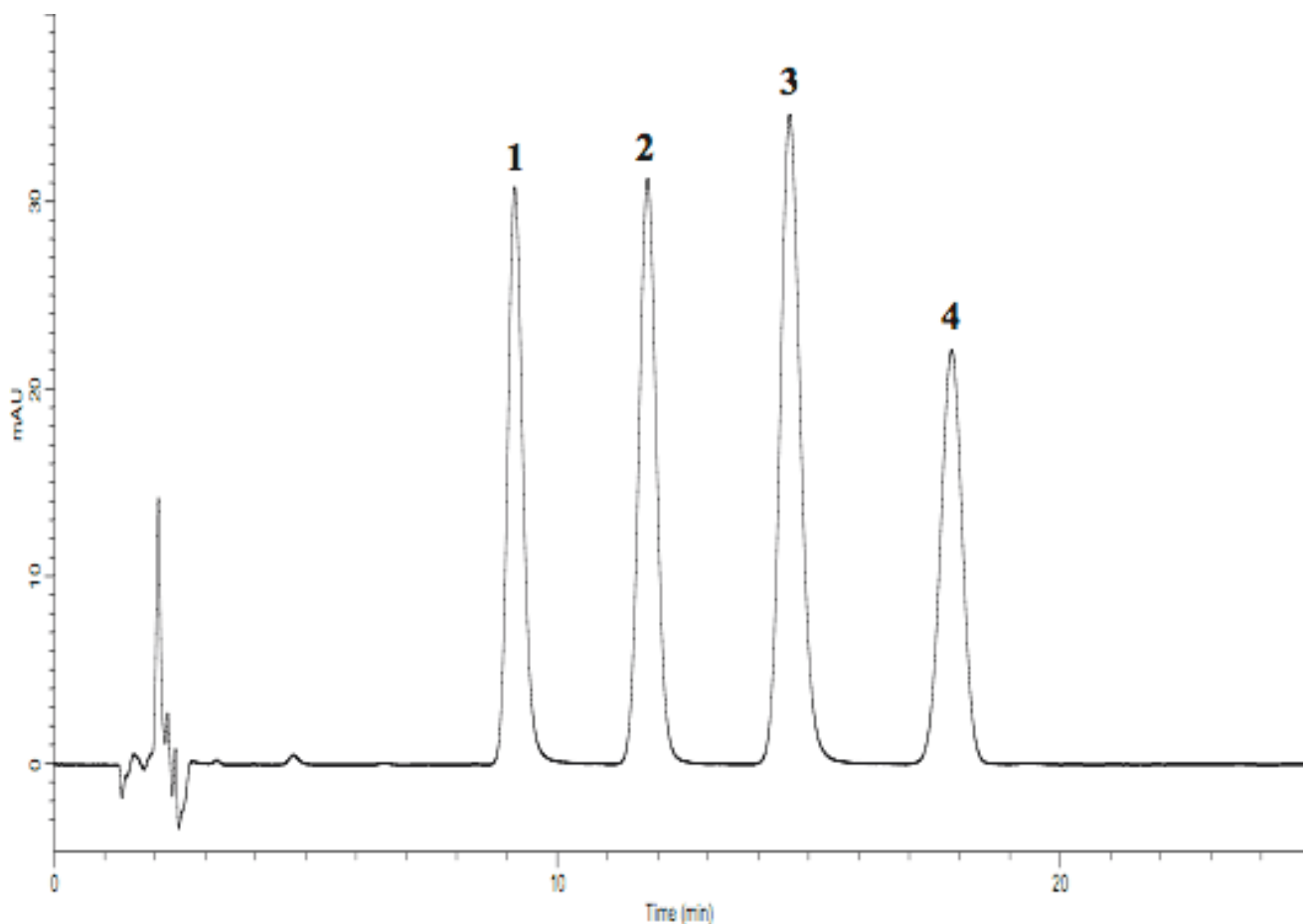


Analysis of Toad Venom Extract (Under the Condition of Japanese Pharmacopoeia)

Data No. LA555-0698



System :GL-7400 system
Column :Inertsil ODS-P (5 μ m, 150 \times 4.6 mm I.D.)
Column Cat. No.:
Eluent :A) CH₃CN
 B) 0.1 % H₃PO₄
 A/B = 45/55, v/v
Flow rate :0.8 mL/min
Col. Temp. :40 °C
Detection :PDA 300 nm (GL-7452A PDA detector)
Injection Vol. :10 μ L
Sample :Toad Venom Standard

Solutes : 1. Bufalin (32 mg/L)
 2. Cinobufagin (43 mg/L)
 3. Resibufogenin (39 mg/L)
 4. Indomethacin (25 mg/L)