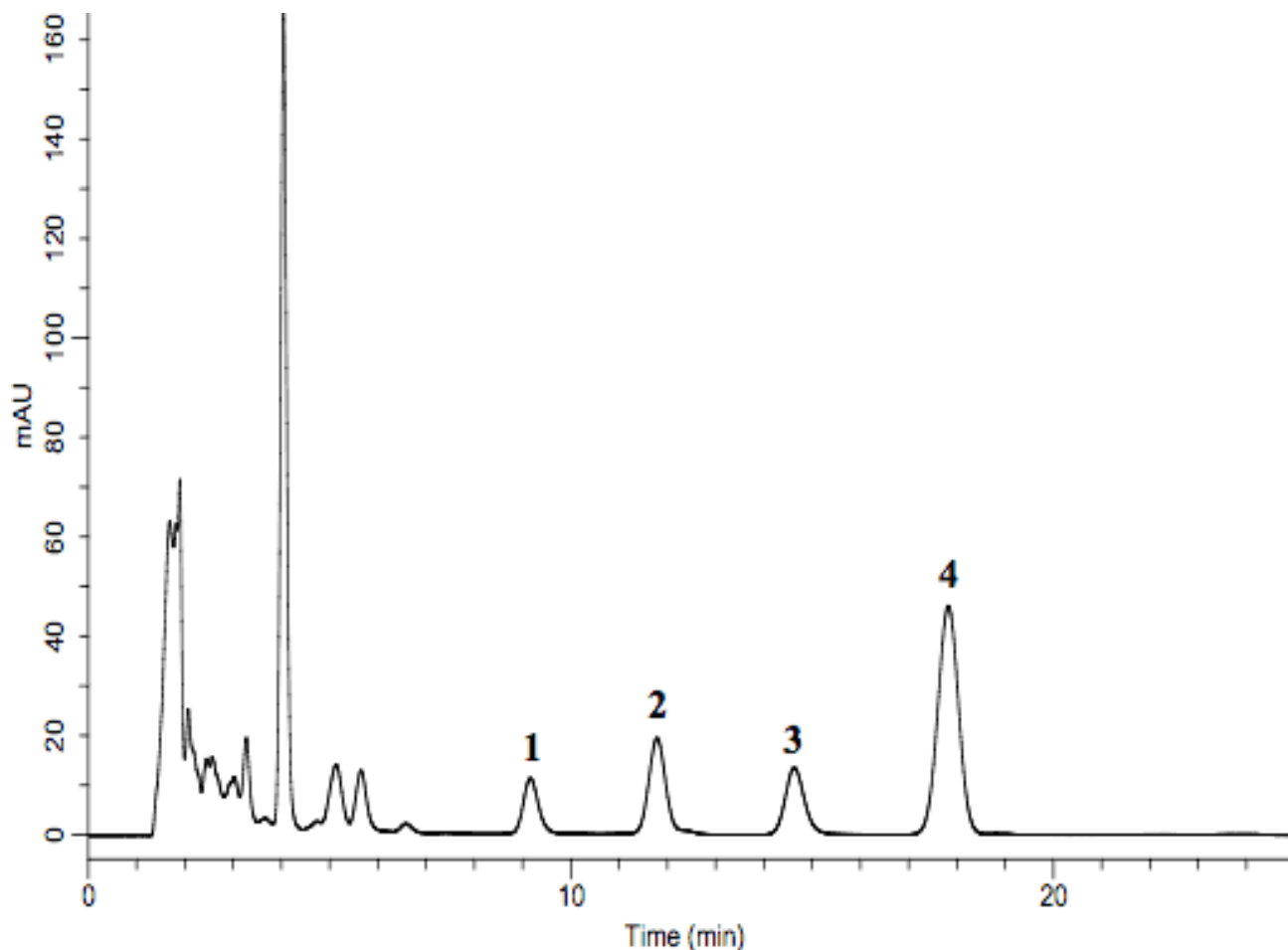


Analysis of Toad Venom Extract (Under the Condition of Japanese Pharmacopoeia)

Data No. LA556-0698



System :GL-7400 system

Column :Inertsil ODS-P (5 μ m, 150 \times 4.6 mm I.D.)

Column Cat. No.:

Eluent :A) CH₃CN

B) 0.1 % H₃PO₄

A/B = 45/55, v/v

Flow rate :0.8 mL/min

Col. Temp. :40 °C

Detection :PDA 300 nm (GL-7452A PDA detector)

Injection Vol. :10 μ L

Sample :Toad Venom

Solutes : 1. Bufalin

2. Cinobufagin

3. Resibufogenin

4. Indomethacin