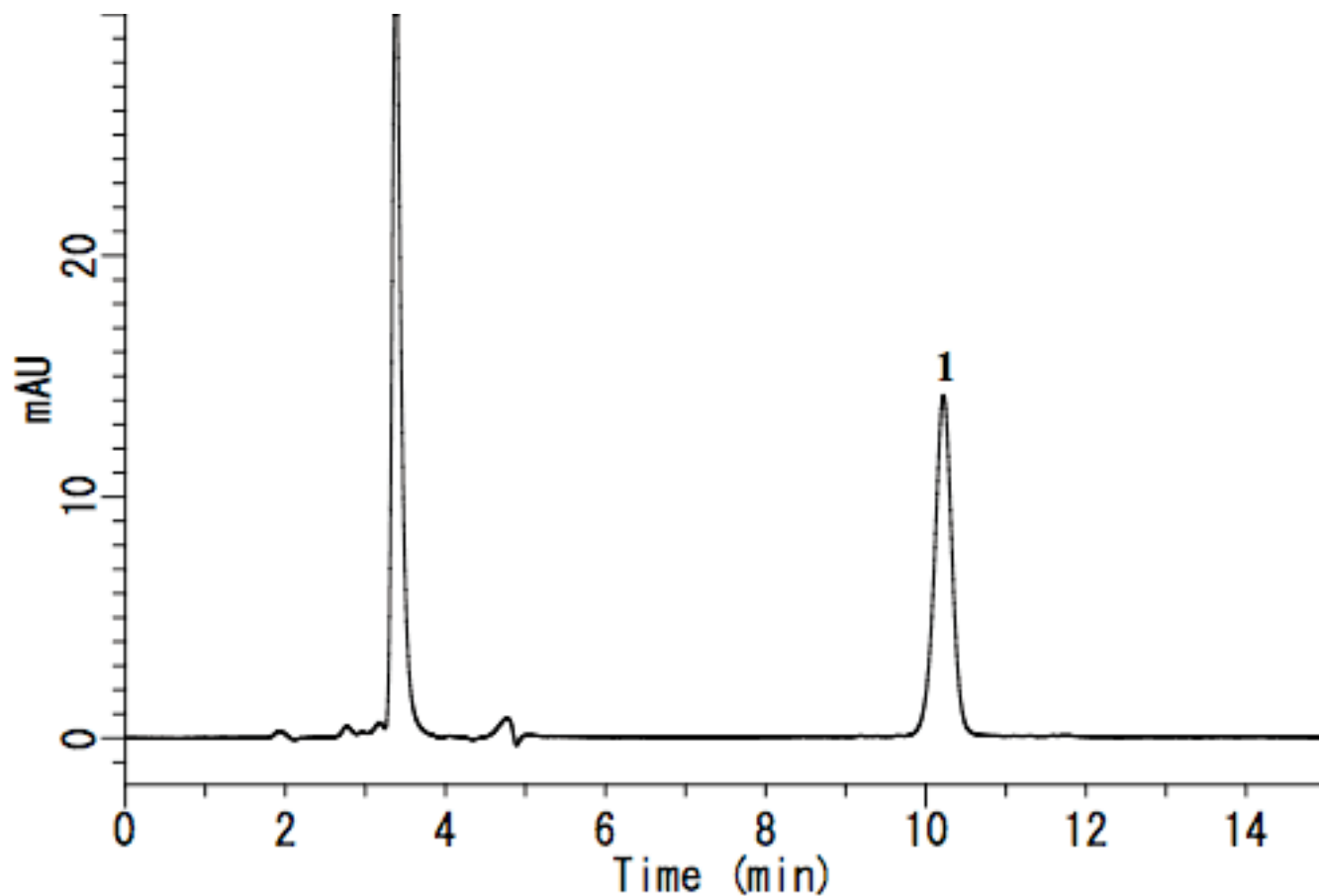


Analysis of Allantoin

Data No. LA557-0696



System : GL-7400 system
Column : Inertsil DIOL (5 μ m, 250 \times 3.0 mm I.D.)
Column Cat. No.:
Eluent : A) CH₃CN
 B) H₂O
 A/B = 95/5, v/v
Flow rate : 0.4 mL/min
Col. Temp. : 40 °C
Detection : 210 nm (GL-7452A PDA detector)
Injection Vol. : 20 μ L
Sample : Allantoin

Solutes : 1. Allantoin (5.0 mg/L)