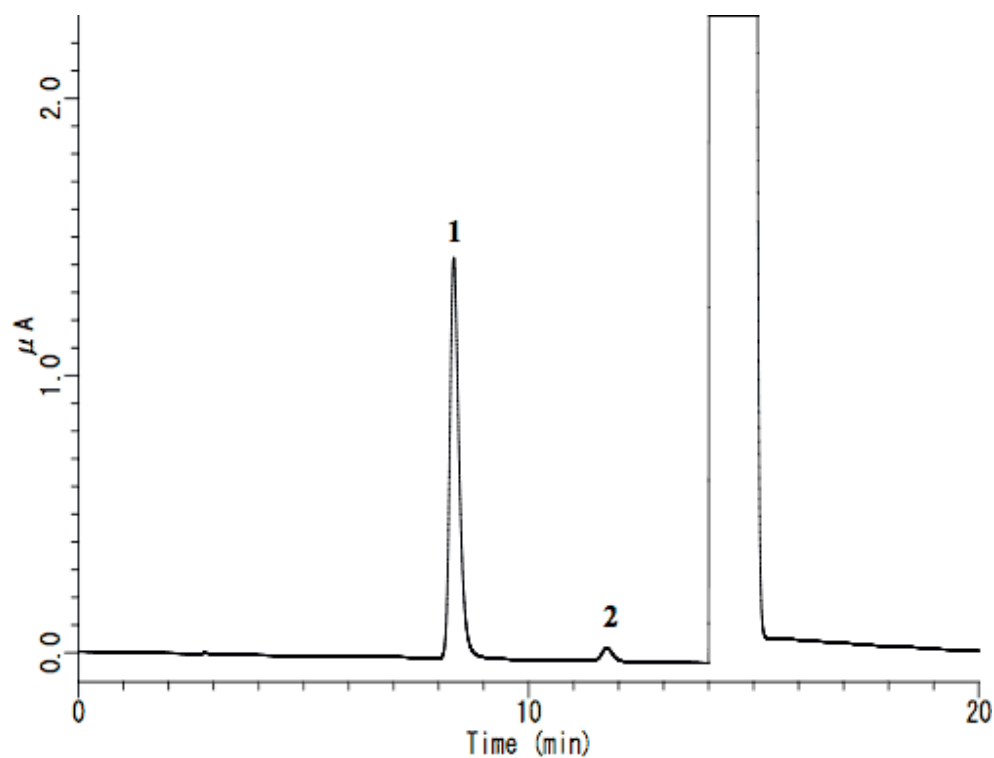


InertSearch™ for LC

Inertsil® Applications

Analysis of L-Cysteine and L-Cystine

Data No. LA566-0000



System : GL-7400 system

Solutes : 1. L-Cysteine

Column : Inertsil ODS-3 (3 μm, 150×3.0 mm I.D.)

2. L-Cystine

Column Cat. No. :

Eluent : A) CH₃CN

B) 50 mM NaHPO₄, 5mM Sodium1-Octanesulfonate, (pH 2.2; H₃PO₄)

A/B = 2.5/97.5 ,w/w

Flow rate : 0.4 mL/min.

Col. Temp. : 40 °C

Detection : ECD 1600 mV vs. Ag/AgCl (ED703 pulse ECD Detector, Diamond)

Injection Vol. : 10 μL

Sample : L-Cysteine and L-Cystine