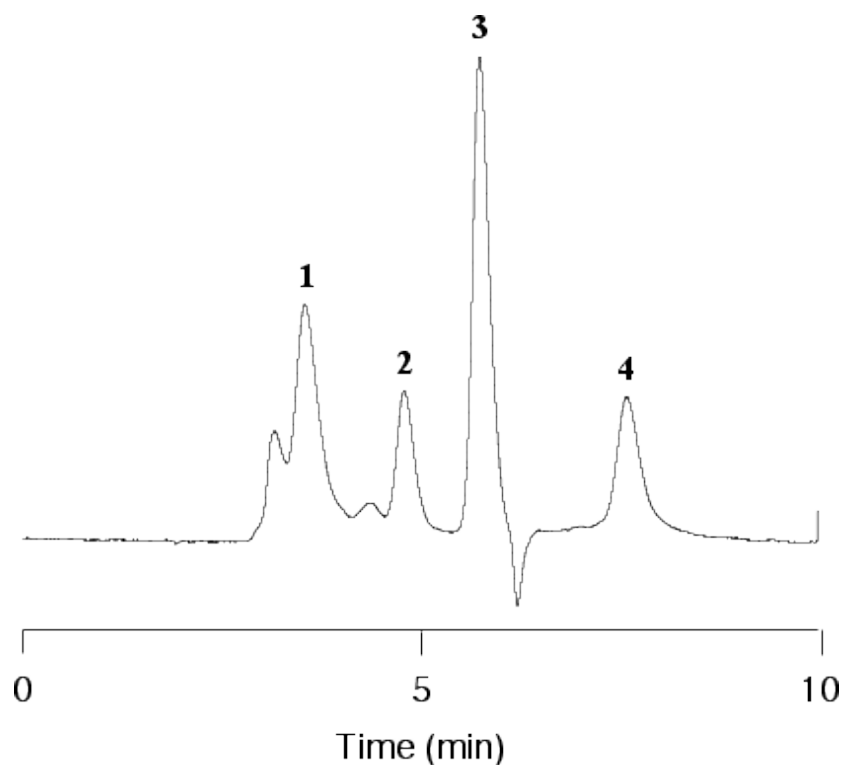


Analysis of Protein (SEC mode)

Data No. LA590-0000



Column	: Inertsil WP300 Diol 5 µm 250 x 4.6 mm I.D.	Solutes	: 1. Thyroglobulin (Mw 660,000) 2. Bovine serum albumin (BSA, Mw 66,000) 3. Lysozyme (Mw 14,300) 4. Insulin chain B (Mw 3,500)
Column Cat. No.	: 5020-05946		
Eluent	: 0.2 M NaH ₂ PO ₄ (pH 6.9; Na ₂ HPO ₄)		
Flow rate	: 0.5 mL/min.		
Col. Temp.	: 30°C		
Detection	: UV 280 nm		
Injection Vol.	:		
Sample	:		