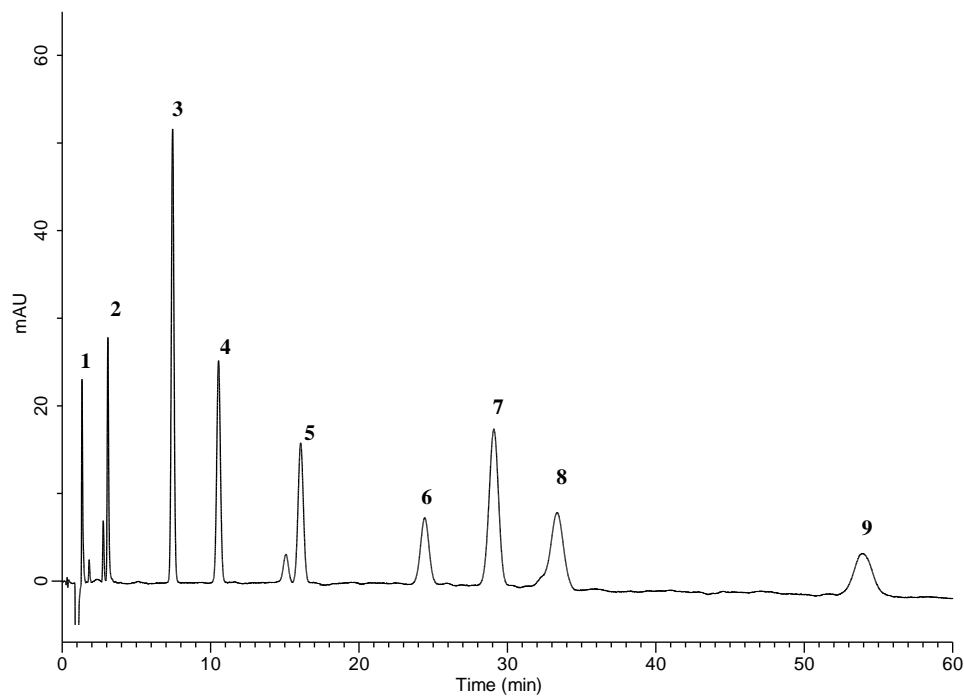


## Analysis of 9 kinds of Pesticides for Golf Course



### Conditions

**System** : GL-7400 HPLC system  
**Column** : Inertsil ODS-4 (5 $\mu$ m, 150  $\times$  3.0 mm I.D.)  
**Column Cat. No.** : 5020-03925  
**Eluent** : A) CH<sub>3</sub>OH  
           B) 50 mM Sodium citrate (pH 3.5, Citric acid)  
           A/B = 45/55, v/v (Mixed by a gradient mixer)  
**Flow Rate** : 0.8 mL/min  
**Col. Temp.** : 40  $^{\circ}$ C  
**Detection** : UV 235 nm (GL-7452A PDA detector)  
**Injection Vol.** : 20  $\mu$ L  
**Sample** : Pesticides

### Analyte:

**1.Asulam** (10 mg/L)  
**2.Oxine Copper** (10 mg/L)  
**3.Triclopyr** (10 mg/L)  
**4.Mecoprop (MCP)** (10 mg/L)  
**5.Thiram** (10 mg/L)  
**6.Flazasulfuron** (10 mg/L)  
**7.Halosulfuron Methyl** (10 mg/L)  
**8.Siduron** (10 mg/L)  
**9.Azoxystrobin** (10 mg/L)