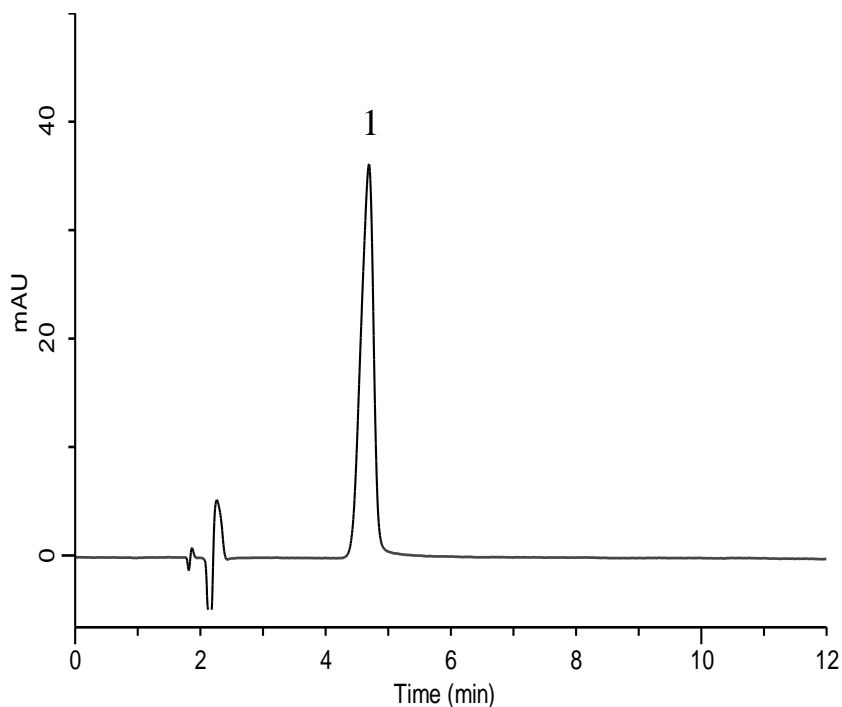
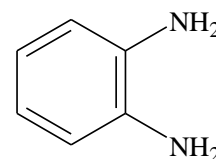


Analysis of *o*-Phenylenediamine

**Analyte :**1. *o*-Phenylenediamine 50 mg/L

Structures are created using Chemistry 4-D Draw which is provided by ChemInnovation Software, Inc.

Conditions

System : GL-7400 HPLC system
Column : Inertsil ODS-4 (5 μm, 150 x 4.6 mm I.D)
Column Cat. No. : 5020-03945
Eluent : A) CH₃CN
B) H₂O
A/B = 15/85, v/v
(Mixed by a gradient mixer)
Flow Rate : 1.0 mL/min
Col. Temp. : 40 °C
Detection : UV 290 nm (GL-7452A PDA Detector)
Injection Vol. : 10 μL
Sample : *o*-Phenylenediamine