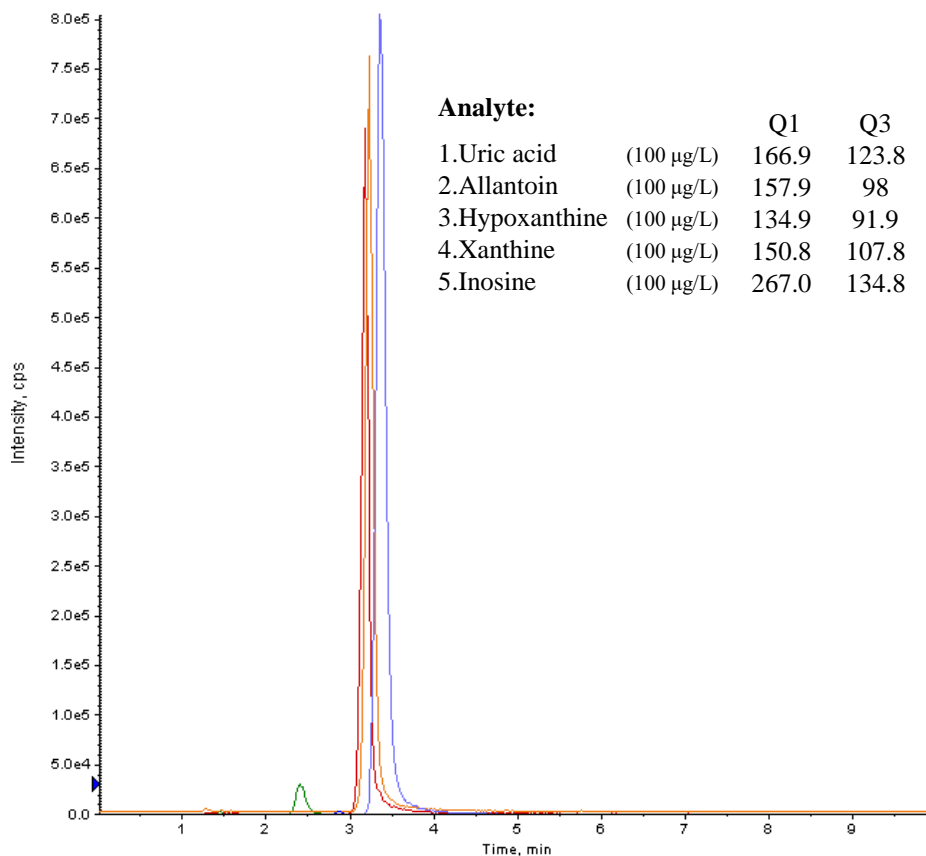


Analysis of purine derivatives by LC/MS/MS



Conditions

System : LC800 HPLC system
 4000 Q TRAP®
Column : Inertsil HILIC (5µm, 150 x 2.1 mm I.D.)
Column Cat. No. : 5020-07705
Eluent : A) CH₃CN
 B) 2 mM Ammonium acetate
 A/B = 90/10, v/v
Flow Rate : 0.3 mL/min
Col. Temp. : 40 °C
Detection : LC/MS/MS (4000 Q TRAP®: ESI, Negative, MRM)
 CUR CAD IS TEM GS1 GS2
 10 8 -4500 700 60 30
Injection Vol. : 10 µL
Sample : Purine derivatives

Analysis of purine derivatives by LC/MS/MS

