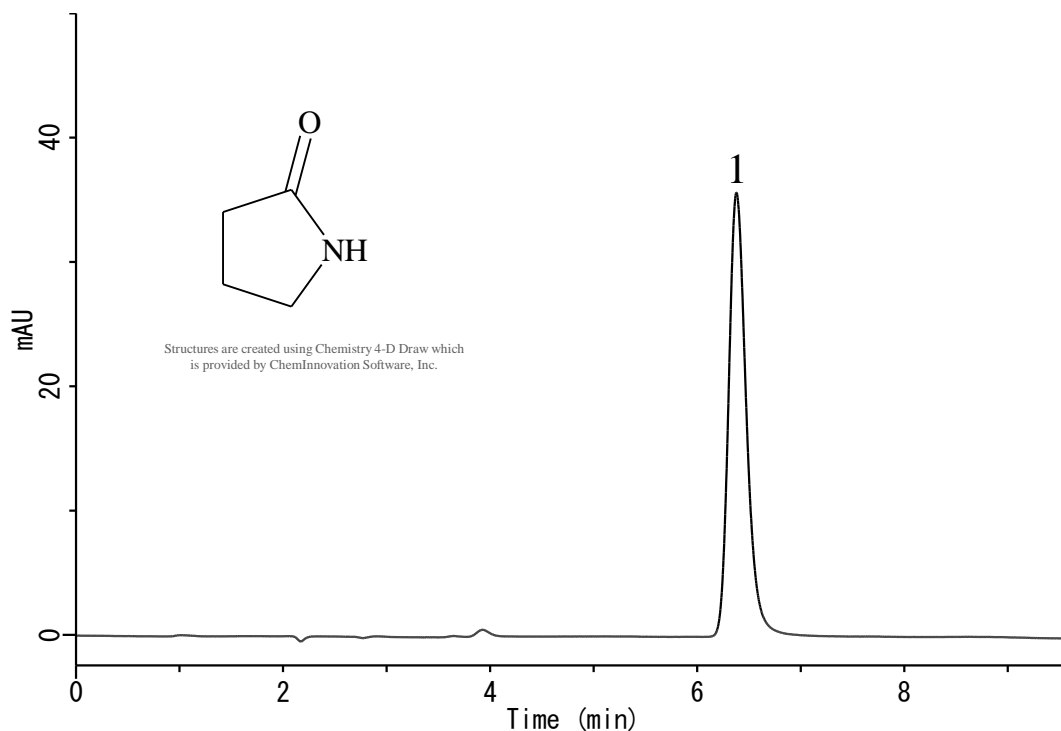


## Analysis of 2-Pyrrolidone



### Conditions

**System** : GL-7400 HPLC system  
**Column** : Inertsil ODS-3 (5 $\mu$ m, 150 x 4.6 mm I.D.)  
**Column Cat. No.** : 5020-01731  
**Eluent** : A) CH<sub>3</sub>OH  
B) H<sub>2</sub>O  
A/B = 3/97, v/v (Mixed by a gradient mixer)  
**Flow rate** : 1.0 mL/min  
**Col. Temp.** : 25 °C  
**Detection** : UV 210 nm (GL-7450 UV Detector)  
**Injection Vol.** : 10  $\mu$ L  
**Sample** : 2-pyrrolidone

### Analyte:

1. Pyrrolidone (50 mg/L)