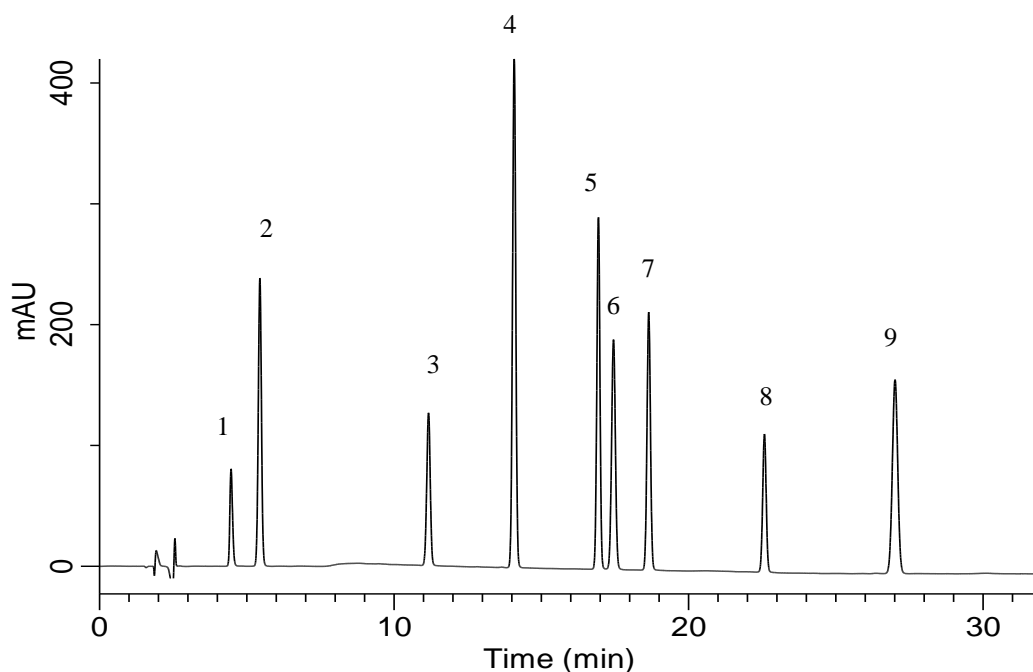


## Analysis of Preservatives



### Conditions

<b>System</b>	: GL-7400 HPLC System
<b>Column</b>	: Inertsil ODS-4 (5 $\mu$ m, 150 x 4.6 mm I.D.)
<b>Column Cat. No.</b>	: A) CH <sub>3</sub> CN
<b>Eluent</b>	: B) 25 mM CH <sub>3</sub> COONa (pH 4.6, CH <sub>3</sub> COOH) A/B = 10/90 – 4 min – 10/90 – 16 min – 40/60 – 10 min hold, v/v
<b>Flow Rate</b>	: 1.0 mL/min
<b>Col. Temp.</b>	: 40 °C
<b>Detection</b>	: UV 238 nm (GL-7450 UV Detector)
<b>Injection Vol.</b>	: 10 $\mu$ L

### Analyte

Preservatives	
1. Sodium Saccharin	(50 $\mu$ g/L)
2. <i>p</i> -Hydroxy benzoic acid	(50 $\mu$ g/L)
3. Sorbic acid	(50 $\mu$ g/L)
4. Benzoic acid	(50 $\mu$ g/L)
5. <i>p</i> -Hydroxy benzoic acid methyl ester	(50 $\mu$ g/L)
6. Dehydroacetic Acid	(50 $\mu$ g/L)
7. <i>p</i> -Toluic acid	(50 $\mu$ g/L)
8. <i>p</i> -Hydroxy benzoic acid ethyl ester	(50 $\mu$ g/L)
9. <i>p</i> -Hydroxy benzoic acid <i>n</i> -propyl ester	(50 $\mu$ g/L)