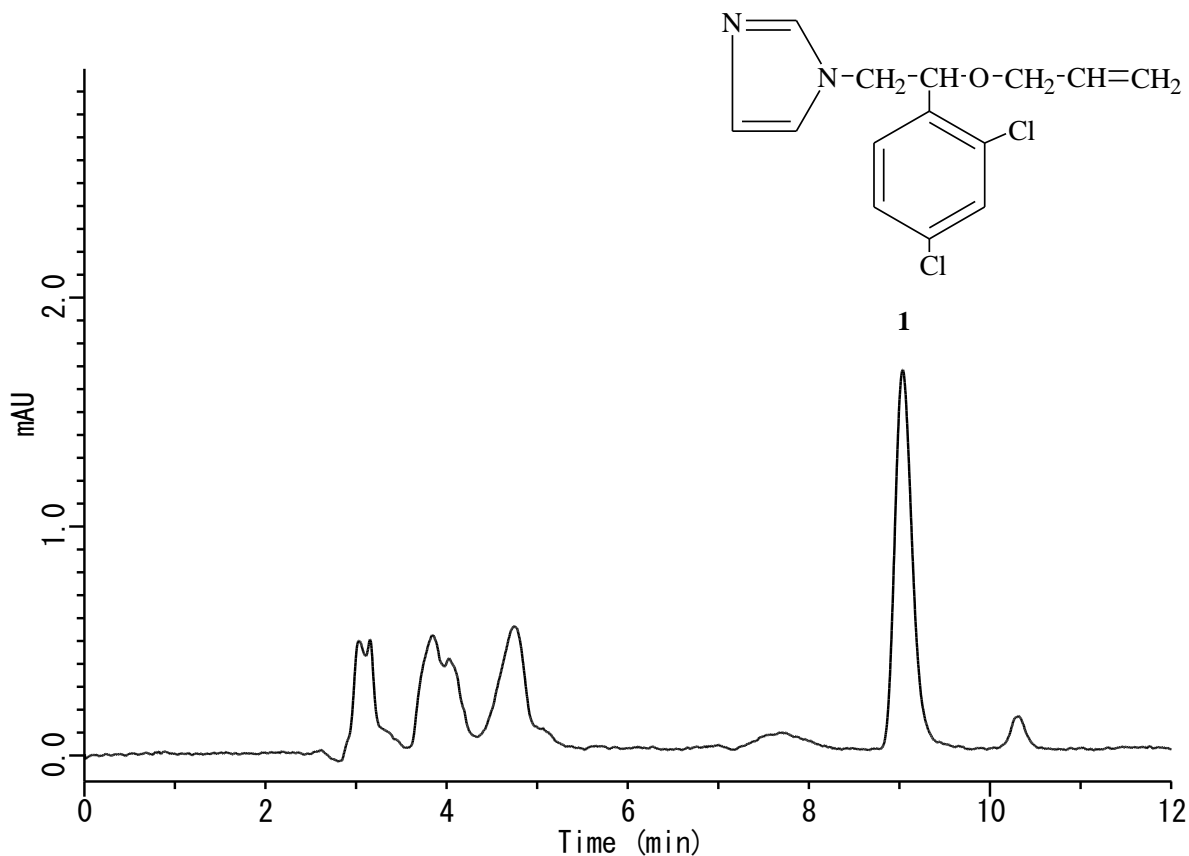


Analysis of Imazalil



Conditions

System : GL-7400 system
Column : Inertsil ODS-3 (5 μ m, 250 x 4.6 mm I.D.)
Column Cat. No. : 5020-01732
Eluent : A) CH₃CN
 : B) 10 mM KH₂PO₄
 : A/B = 70/30, v/v
Flow Rate : 0.7 mL/min
Col. Temp. : 40 °C
Detection : UV 230 nm (GL-7450 UV Detector)
Injection Vol. : 10 μ L

Analyte

1. Imazalil (IMZ) (5.0 mg/L)