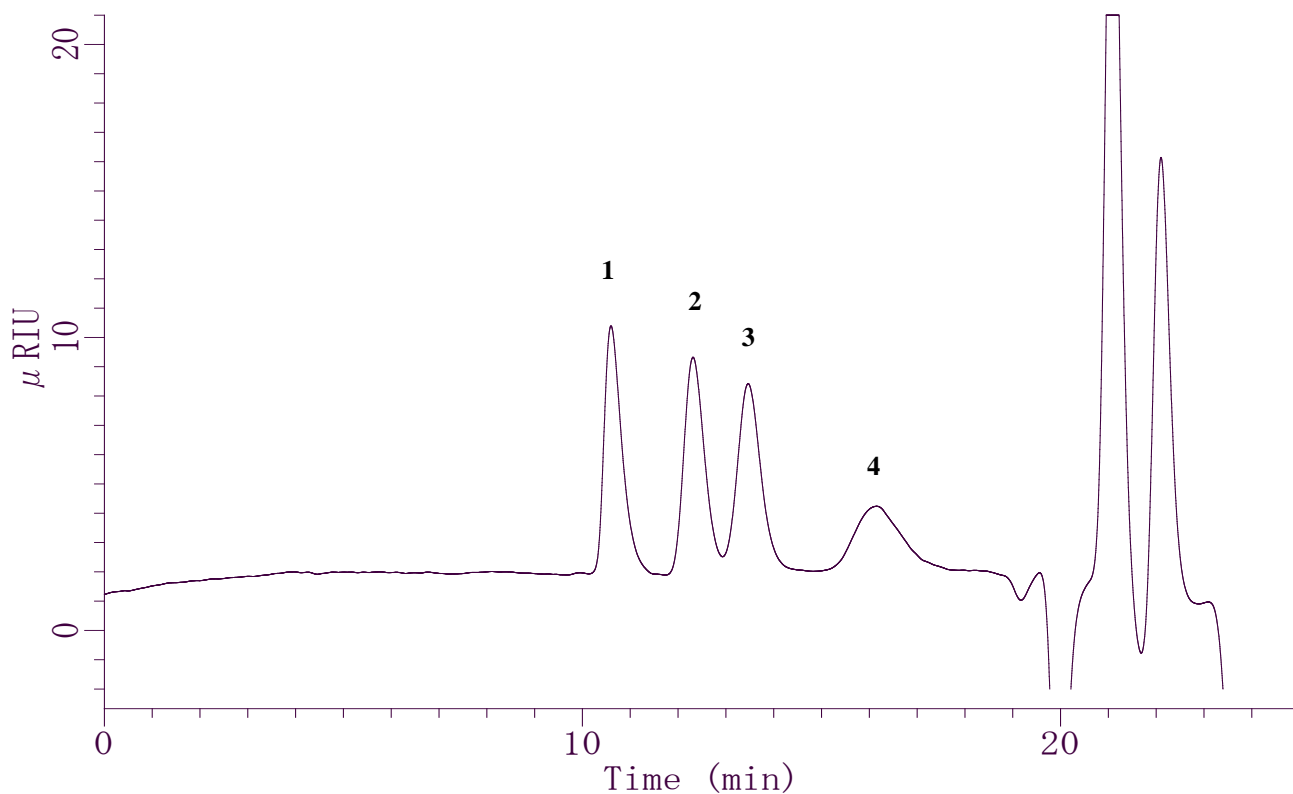


## Analysis of Polystyrene



### Conditions

**System** : GL7400 HPLC system  
**Column** : 1. Inertsil WP300 Diol (5 $\mu$ m, 250 x 4.6 mmI.D.)  
           + 2. Inertsil Diol (5 $\mu$ m, 250 x 4.6 mmI.D.)  
**Column Cat. No.** : 1. 5020-05946  
                       2. 5020-05646  
**Eluent** : THF  
**Flow Rate** : 0.3 mL/min  
**Col. Temp.** : 35°C  
**Detection** : RI (GL-7454 RI Detector) (Cell Temp. 35°C)  
**Injection Vol.** : 20 $\mu$ L

### Analyte

Polystyrenes:  
 M.W.  
 1. 465,000  
 2. 48,000  
 3. 19,000  
 4. 2,200