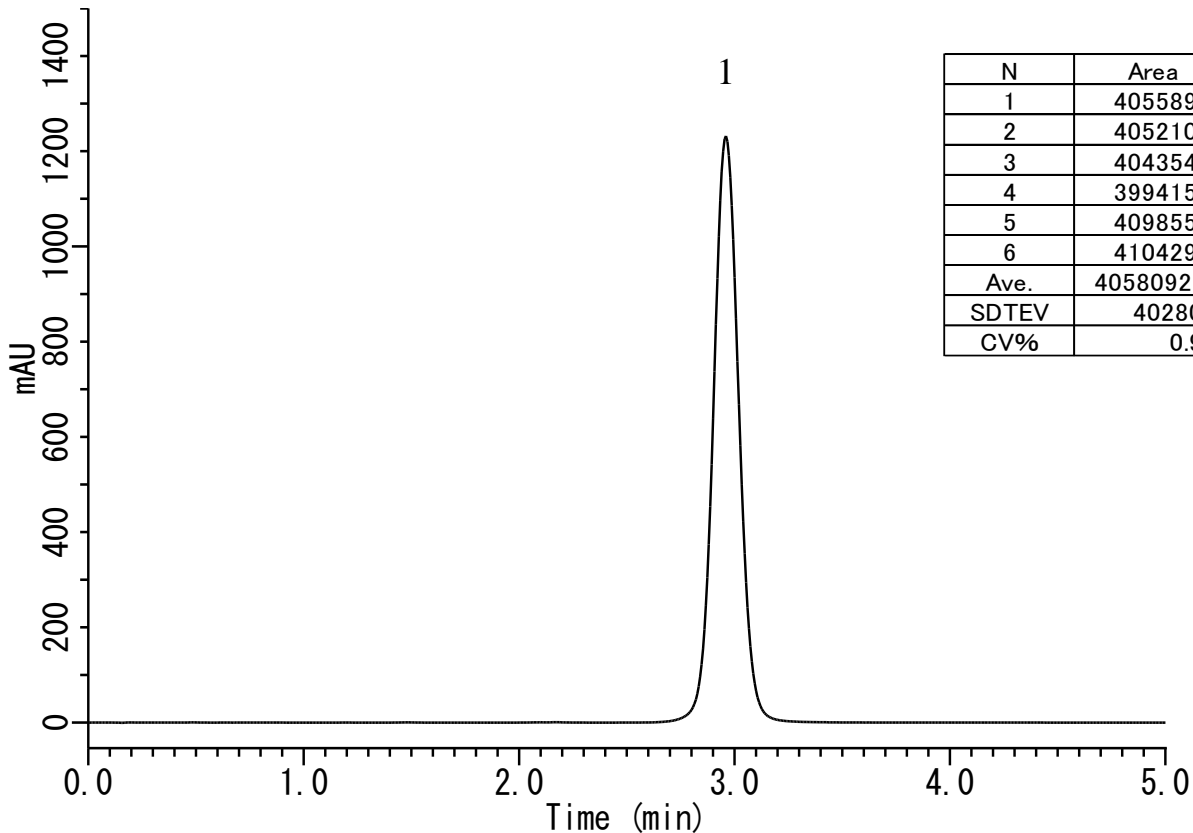


## Analysis of Simvastatin



### Conditions

**System** : GL-7400 HPLC system  
**Column** : Inertsil ODS-SP (3 $\mu$ m, 33 x 4.6 mm I.D.)  
**Column Cat. No.** : 5020-87035  
**Eluent** : A) CH<sub>3</sub>CN  
           B) 0.1% H<sub>3</sub>PO<sub>4</sub>  
           A/B = 50/50, v/v  
**Flow rate** : 2.4 mL/min  
**Col. Temp.** : 25 °C  
**Detection** : UV 238 nm (GL-7450 UV detector)  
**Injection Vol.** : 5  $\mu$ L

### Analyte

1. Simvastatin (1500 mg/L)