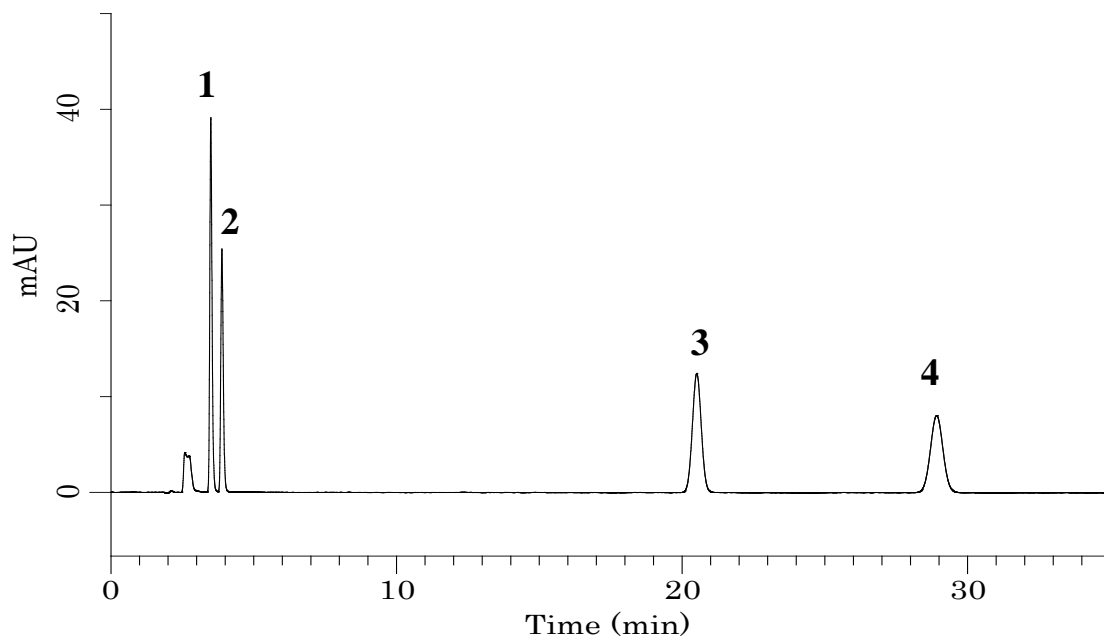


## Analysis of Phenols



### Conditions

**System** : GL-7400 HPLC System  
**Column** : Inertsil ODS-3 (5 $\mu$ m, 250 x 4.6 mm I.D.)  
**Column Cat. No.** : 5020-01732  
**Eluent** : A) CH<sub>3</sub>CN  
           B) 20 mM KH<sub>2</sub>PO<sub>4</sub> (pH 3.0, H<sub>3</sub>PO<sub>4</sub>)  
           A/B = 70/30, v/v  
**Flow Rate** : 1.0 mL/min  
**Col. Temp.** : 40 °C  
**Detection** : UV 280 nm (GL-7450 UV Detector)  
**Injection Vol.** : 5 $\mu$ L

### Analyte

1. Phenol (50 mg/L)  
 2. Bisphenol-A (30 mg/L)  
 3. 4-Octylphenol (100 mg/L)  
 4. 4-Nonylphenol (100 mg/L) (in CH<sub>3</sub>OH)