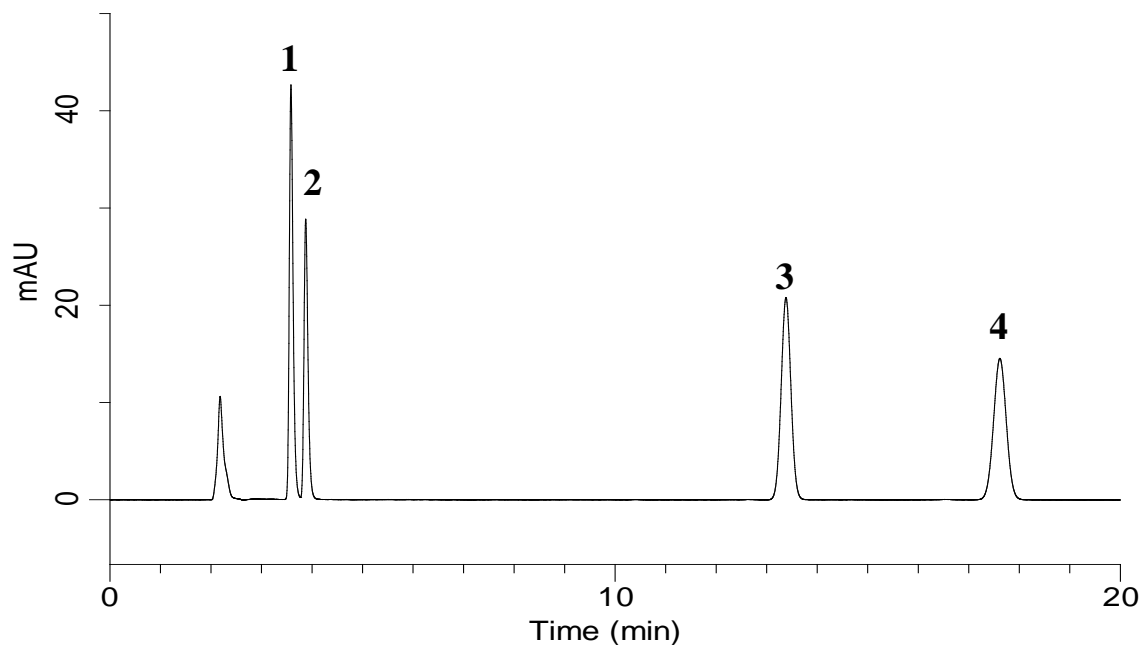


Analysis of Phenols



Conditions

System : GL-7400 HPLC System
Column : Inertsil ODS-SP (5 μ m, 250 x 4.6 mm I.D.)
Column Cat. No. : 5020-02746
Eluent : A) CH₃CN
 B) 20mM KH₂PO₄ (pH3.0, H₃PO₄)
 A/B = 70/30, v/v
Flow Rate : 1.0 mL/min
Col. Temp. : 40 °C
Detection : UV 280 nm (GL-7450 UV Detector)
Injection Vol. : 5 μ L

Analyte

1. Phenol (50 mg/L)
 2. Bisphenol-A (30 mg/L)
 3. 4-Octylphenol (100 mg/L)
 4. 4-Nonylphenol (100 mg/L) (in CH₃OH)