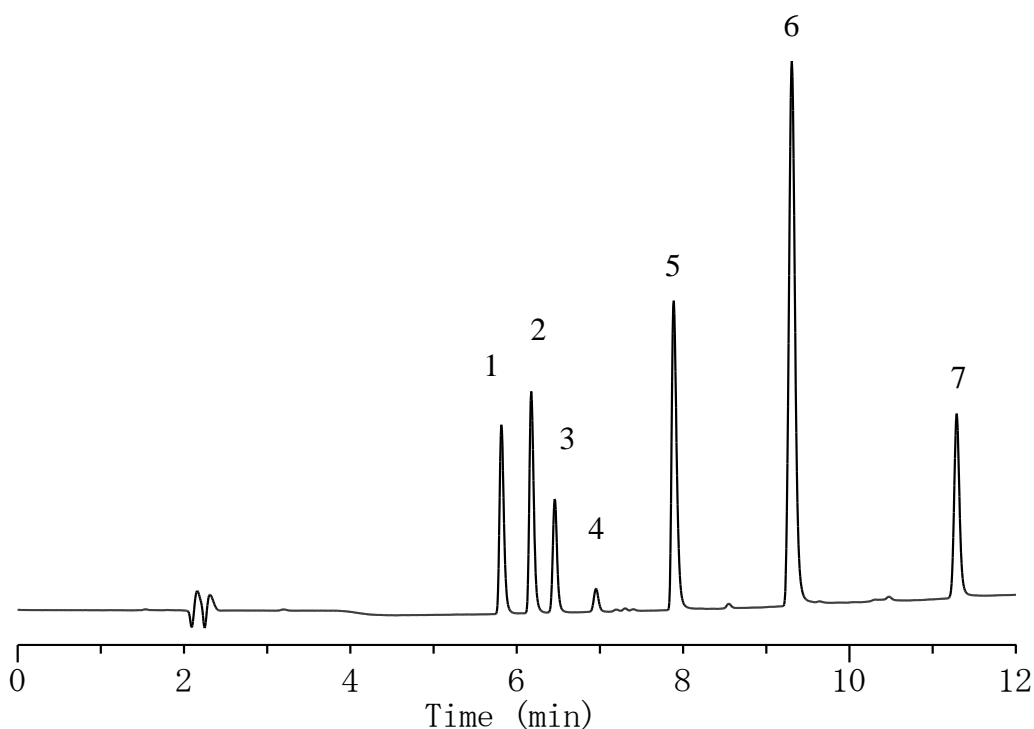


Analysis of 7 Sulfa drugs (II)



Conditions

System : GL-7400 HPLC system
Column : Inertsil Sulfa C18 (3 μ m, 150 x 4.6 mmI.D.)
Column Cat. No. : 5020-07535
Eluent : A) CH₃CN/ H₂O /CH₃COOH = 10/90/0.3, v/v/v
 B) CH₃CN/ H₂O /CH₃COOH = 60/40/0.3, v/v/v
 A/B = 100/0 -10 min- 0/100 -10 min- 0/100, v/v
Flow Rate : 1.0 mL/min
Col. Temp. : UV 265 nm (GL-7452A PDA Detector)
Detection : 40 °C
Injection Vol. : 10 μ L

Analyte

Standard samples II
 1. Trimethoprim (5 mg/L)
 2. Ormethoprim (5 mg/L)
 3. Carbadox (2 mg/L)
 4. Thiamphenicol (5 mg/L)
 5. Pyrimethamine (5 mg/L)
 6. Difurazon (10 mg/L)
 7. Nalidixic acid (3 mg/L)