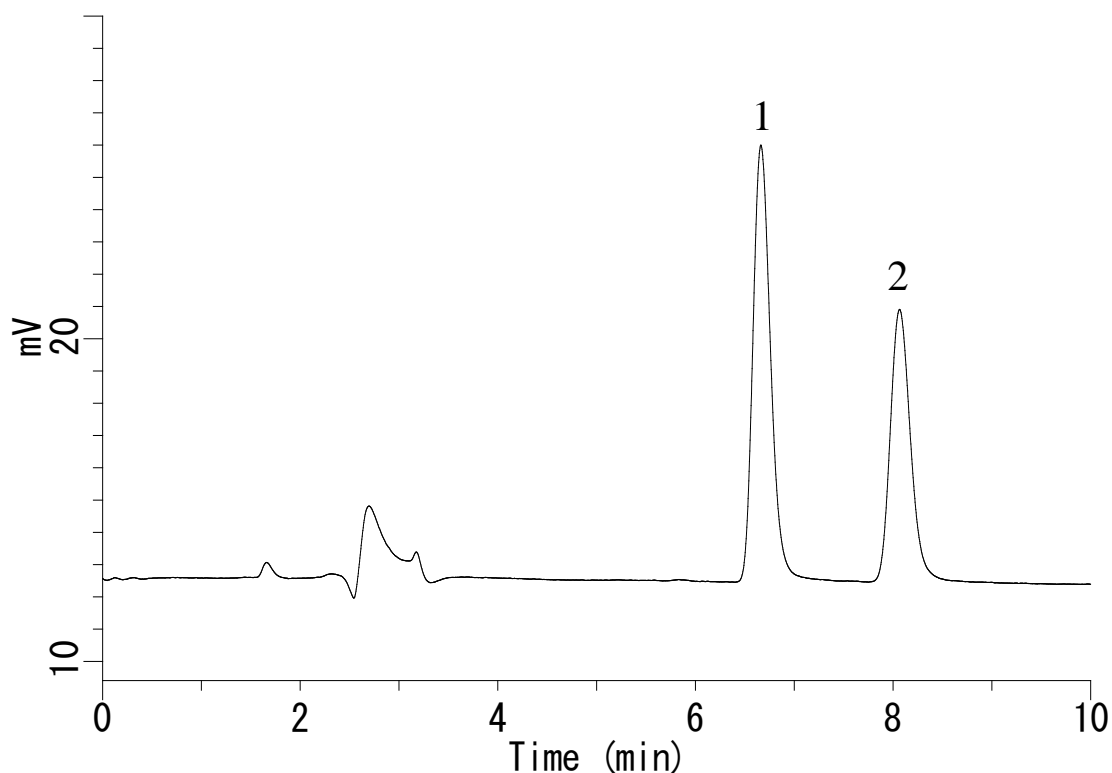


Analysis of Cysteine and Cystine



Conditions

System : GL-7400 system
Column : Inertsil ODS-4 (3 μ m, 150 x 3.0 mm I.D.)
Column Cat. No. : 5020-04025
Eluent : A) CH₃CN
 B) 50 mM NaH₂PO₄, 5 mM IPCC-08 (pH 2.2, H₃PO₄)
 (IPCC-08 : Sodium 1-Octane sulfonate)
 A/B = 2.5/97.5, w/w (Premix)
Flow rate : 0.4 mL/min
Col. Temp. : 35 °C
Detection : ECD 1200 mV vs Ag/AgCl (ED723 EC Detector , Diamond)
Injection Vol. : 10 μ L
Sample : Cysteine and Cystine

Analyte:

1. Cysteine (1000 μ g/L)
 2. Cystine (100 μ g/L)