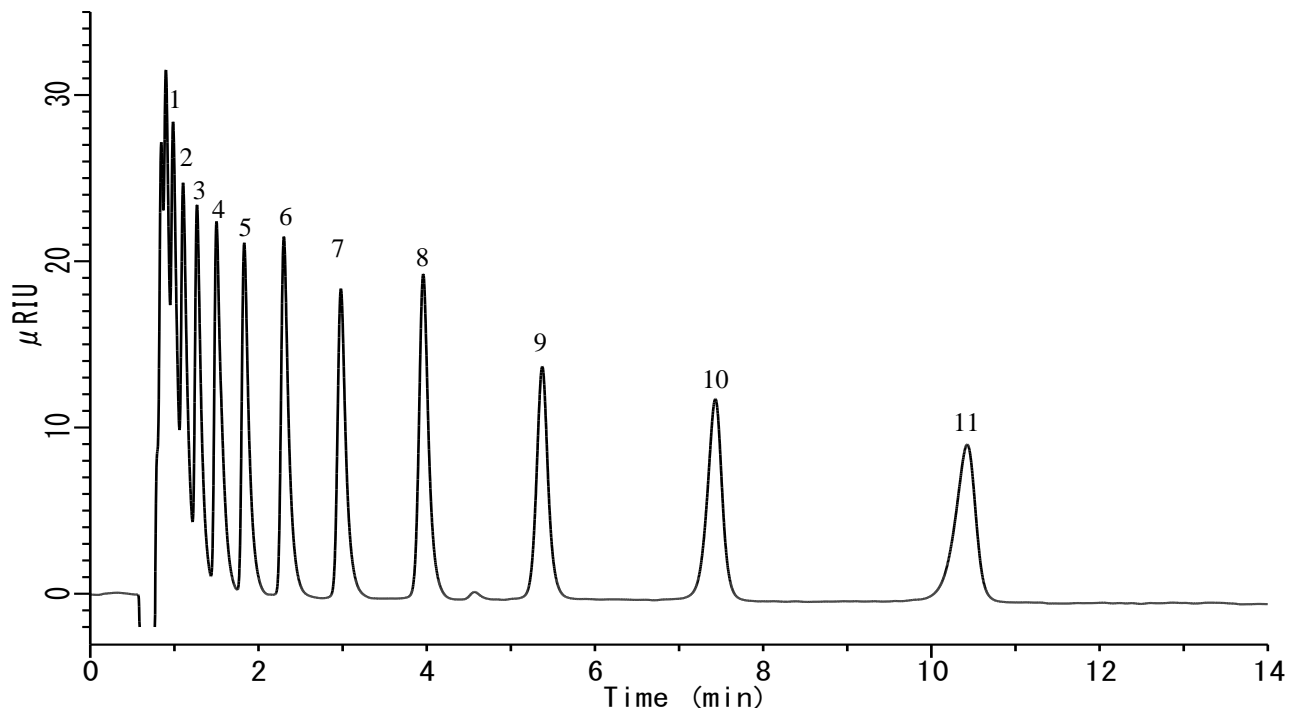


## Analysis of liner fatty acids (RI)



### Conditions

<b>System</b>	: GL-7400 HPLC system
<b>Column</b>	: Inertsil ODS-4 (3 μm, 100 x 4.6 mm I.D)
<b>Column Cat. No.</b>	: 5020-04044
<b>Eluent</b>	: 0.1 % H <sub>3</sub> PO <sub>4</sub> in (CH <sub>3</sub> CN/H <sub>2</sub> O = 70/30)
<b>Flow Rate</b>	: 1.5 mL/min
<b>Col. Temp.</b>	: 40 °C
<b>Detection</b>	: RI(GL-7454 RI Detector)
<b>Injection Vol.</b>	: 10 μL
<b>Sample</b>	: liner fatty acids (C2 - C15)

### Analyte :

1. Valeric acid	(C5)
2. Caproic acid	(C6)
3. Enanthic acid	(C7)
4. Caprylic acid	(C8)
5. Pelargonic acid	(C9)
6. Capric acid	(C10)
7. Undecanoic acid	(C11)
8. Lauric acid	(C12)
9. Tridecanoic acid	(C13)
10. Myristic acid	(C14)
11. Pentadecanoic acid	(C15)

each 5 mg/mL