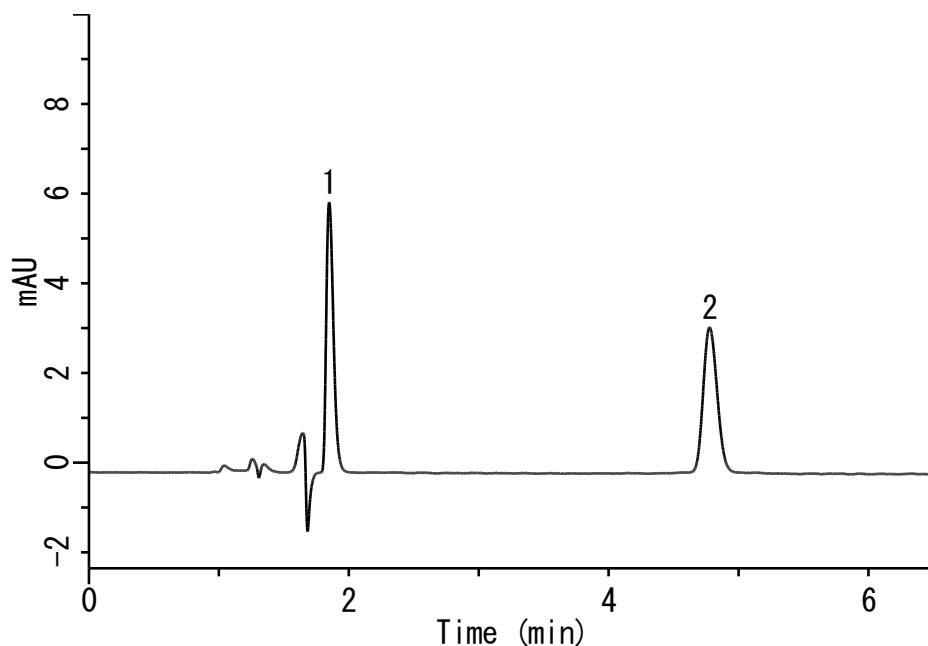


Analysis of Calcium pantothenate and Biotin



Conditions

System : GL-7400 HPLC system
Column : Inertsil ODS-4 HP (3 μ m, 150 x 3.0 mm I.D.)
Column Cat. No. : 5020-14005
Eluent : A) CH₃CN
 B) 0.1% H₃PO₄
 A/B = 15/85, v/v
Flow rate : 0.6 mL/min
Col. Temp. : 40 °C
Detection : UV 210 nm (GL-7452A PDA Detector)
Injection Vol. : 10 μ L
Sample : Standard

Analyte:

1. Calcium pantothenate (10 μ g/mL)
 2. Biotin (10 μ g/mL)