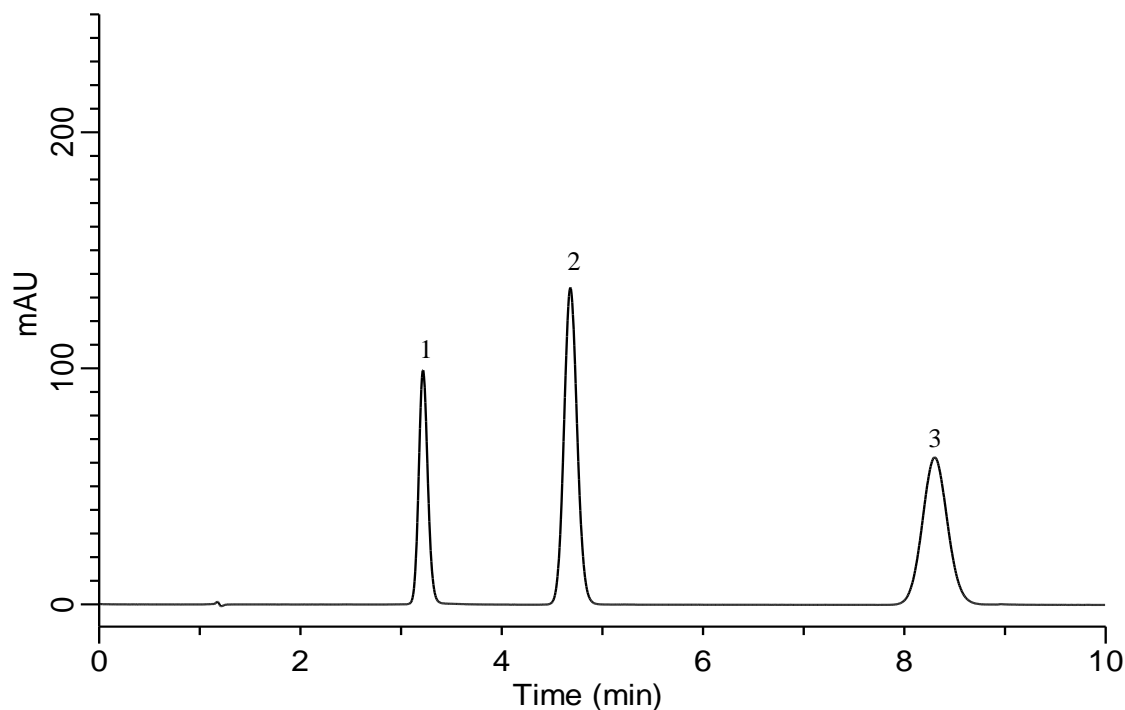


## Analysis of Indometacin (InertSustain C18)



### Conditions

**System** : GL-7400 HPLC System  
**Column** : InertSustain C18 (5  $\mu$ m, 150 x 4.6 mm I.D.)  
**Column Cat. No.** : 5020-07345  
**Eluent** : A) CH<sub>3</sub>OH  
           : B) 0.1 % H<sub>3</sub>PO<sub>4</sub>  
           : A/B = 70/30, v/v  
**Flow Rate** : 1.3 mL/min  
**Col. Temp.** : 30 °C  
**Detection** : UV 254 nm (GL-7452A PDA Detector)  
**Injection Vol.** : 20  $\mu$ L  
**Sample** : Standard

### Analyte :

1. <i>p</i> -Chlorobenzoic acid	50 mg/L
2. <i>p</i> -Hydroxybenzoate	30 mg/L
3. Indomethacin	50 mg/L