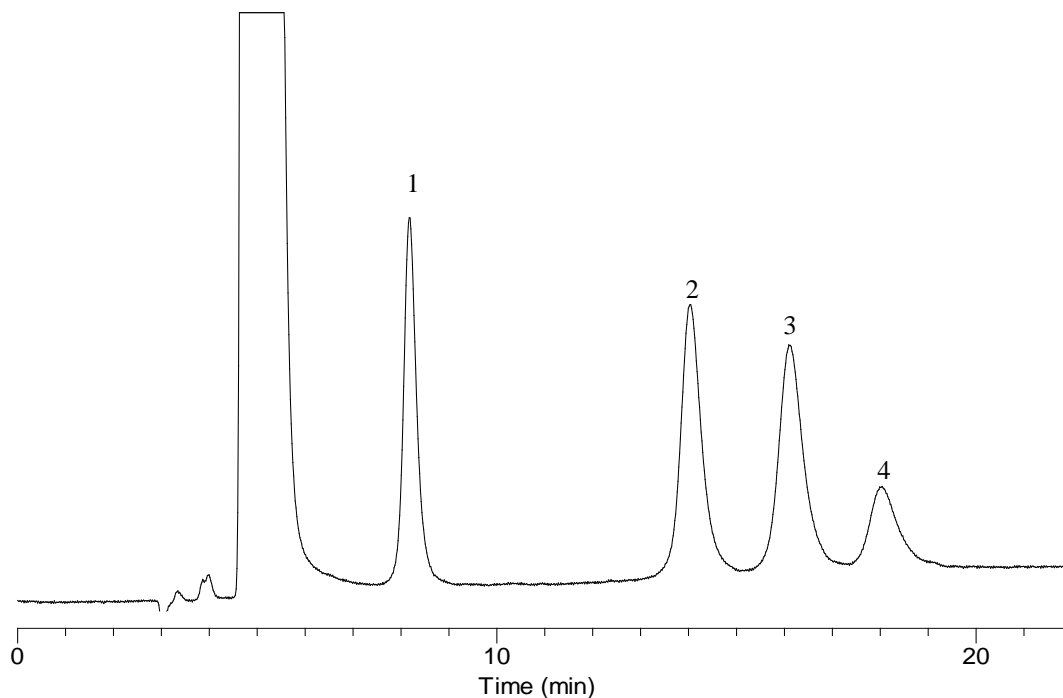


Analysis of Sugar Phosphates



Conditions

System : LC700 system
Column : InertSphere Sugar-1 (5 μ m, 150 x 4.6 mm I.D.)
Column Cat. No. : 5020-11001
Eluent : A) 100 mM NaOH
Flow rate : B) 100 mM NaOH, 500 mM CH₃COONa
Col. Temp. : A/B = 45/55 – 30 min – 20/80, v/v
Detection : 0.5 mL/min
 : 25°C
 : ECD Pulse Mode (ED723, Gold)
 E1: 150 mV t1: 600 ms
 E2: -1500 mV t2: 50 ms
 E3: 600 mV t3: 50 ms
 E4: -200 mV t4: 100 ms
 ts: 50 ms

Analyte:

1. Glucose-1-phosphate (10 mg/L)
2. Glucose-6-phosphate (10 mg/L)
3. Fructose-1-phosphate (10 mg/L)
4. Fructose-6-phosphate (10 mg/L)

Injection Vol. : 10 μ L
Sample : Sugar phosphates