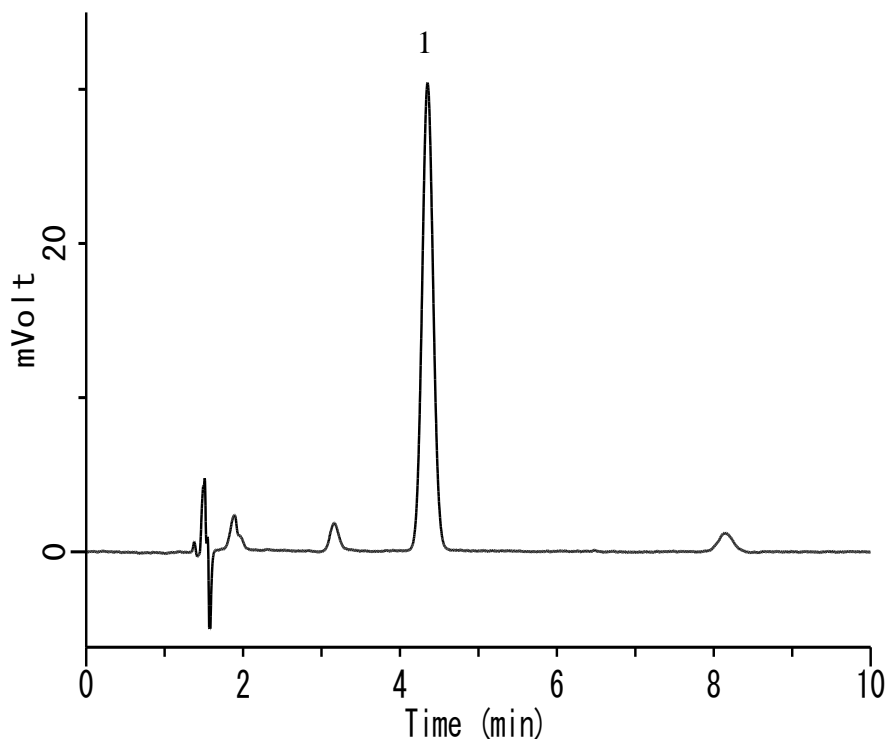


Analysis of Non-ionic surfactant (Detected by Pre-Column complexation with Co-PAR)



Conditions

System	: LC800 HPLC system
Column	: InertSustain C18 (5 μ m, 150 x 4.6 mm I.D.)
Column Cat. No.	: 5020-07345
Eluent	: A) CH ₃ OH B) 10 mM Na ₂ B ₄ O ₇ A/B = 38/62 ,v/v
Flow rate	: 1.0 mL/min
Col. Temp.	: 40 °C
Detection	: UV 510 nm (LC800 UV Detector)
Injection Vol.	: 20 μ L
Sample	: Heptaoxyethylene dodecyl ether (cobalt-4-(2-pyridylazo) resorcinol complex)

Analyte:

1. Heptaoxyethylene dodecyl ether [Deriv.]
0.02 mg/L