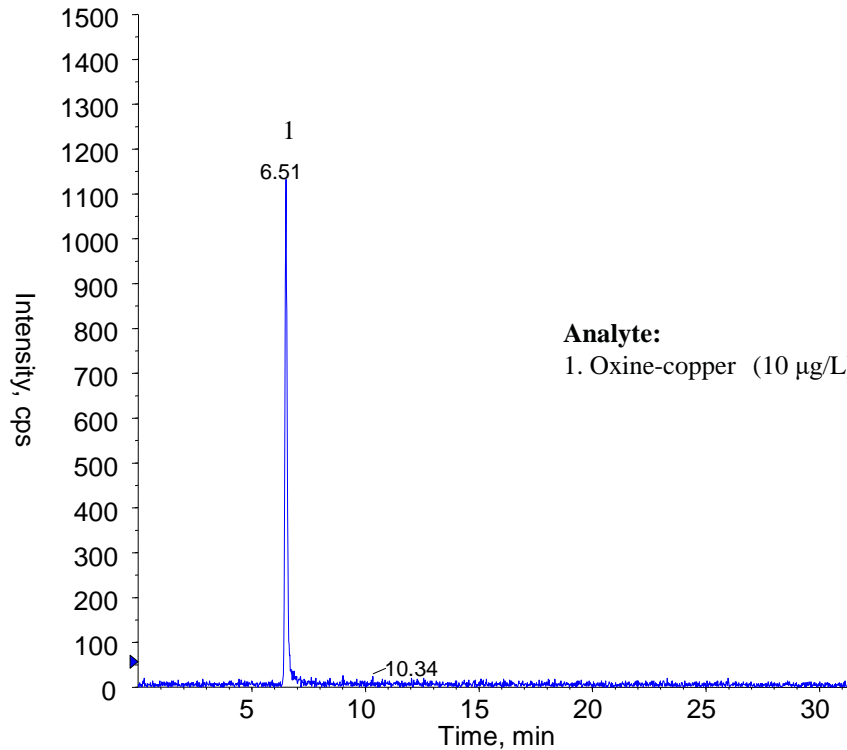


Analysis of Oxine-copper



Analyte:

1. Oxine-copper (10 µg/L) Q1: 145.7 Q3: 74.8

Conditions

- System** : LC800 HPLC system
4000 Q TRAP®
- Column** : InertSustain C18 (3µm, 150 x 2.1 mm I.D.)
- Column Cat. No.** : 5020-07415
- Eluent** : A) CH₃CN
: B) 0.1 % HCOOH in H₂O
A/B = 5/95 -38 min- 100/0, v/v
- Flow rate** : 0.2 mL/min
- Col. Temp.** : 40 °C
- Detection** : LC/MS/MS (4000Q TRAP® : ESI, Positive, MRM)
CUR CAD IS TEM GS1 GS2
30 6 5000 700 80 80
- Injection Vol.** : 5 µL
- Sample** : Standard