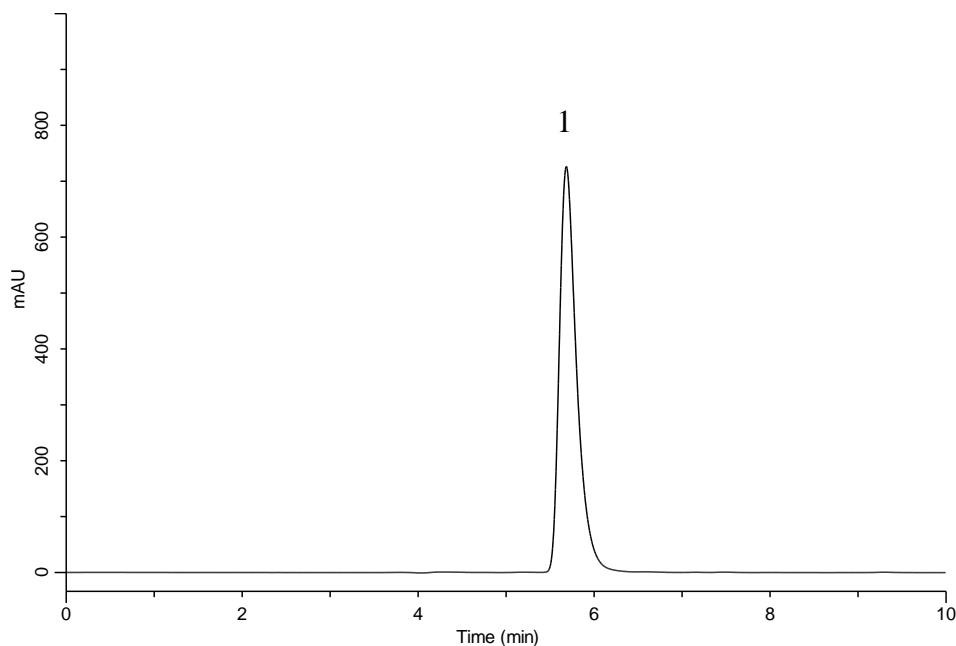


## Analysis of Fexofenadine hydrochloride (InertSustain C18)



### Conditions

**System** : GL-7400 HPLC system  
**Column** : InertSustain C18 (5 $\mu$ m, 150 x 4.6 mm I.D.)  
**Column Cat. No.** : 5020-07345  
**Eluent** : A) CH<sub>3</sub>CN  
          : B) Buffer\*  
          : A/B = 70/30, v/v  
**Flow rate** : 0.3 mL/min  
**Col. Temp.** : 25 °C  
**Detection** : UV 220 nm (GL-7452A PDA Detecor)  
**Injection Vol.** : 50  $\mu$ L  
**Sample** : Standard

\*Dissolve 1.1 g of NaH<sub>2</sub>PO<sub>4</sub>·2H<sub>2</sub>O, 0.5 g of NaClO<sub>4</sub>·H<sub>2</sub>O and 0.3 mL of H<sub>3</sub>PO<sub>4</sub> in 300 mL water

### Analyte:

1. Fexofenadine hydrochloride 30 mg/L