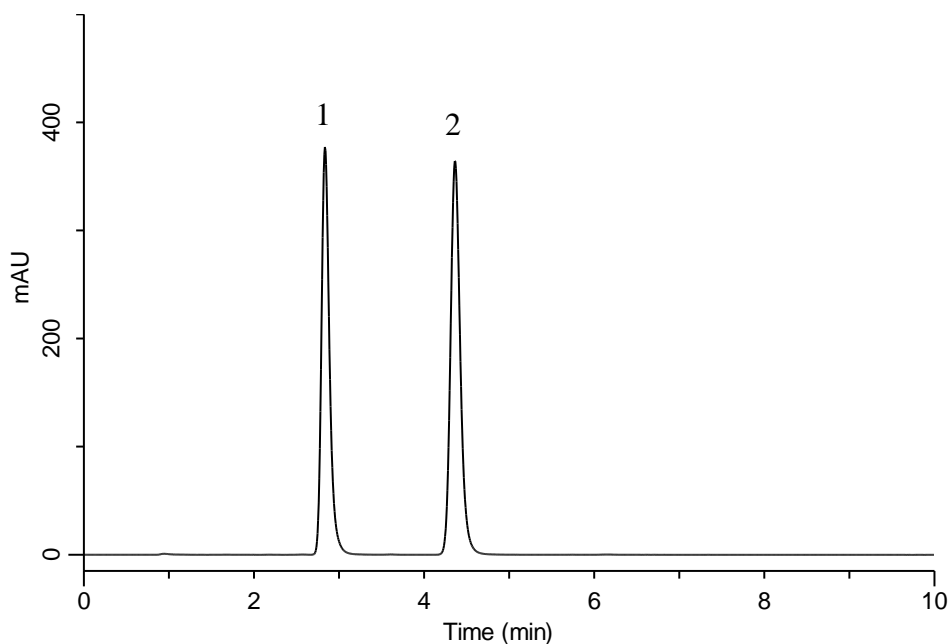


Analysis of Losartan potassium and Valsartan



Conditions

System : GL-7400 HPLC system
Column : InertSustain C18 (3 μ m, 100 x 3.0 mm I.D.)
Column Cat. No. : 5020-07424
Eluent : A) CH₃CN
 : B) 0.1 % CH₃COOH in H₂O
 : A/B = 50/50, v/v
Flow rate : 0.4 mL/min
Col. Temp. : 40 °C
Detection : UV 265 nm (GL-7452A PDA Detector)
Injection Vol. : 5 μ L
Sample : Standard

Analyte:

1. Losartan potassium	0.2 mg/mL
2. Valsartan	0.2 mg/mL