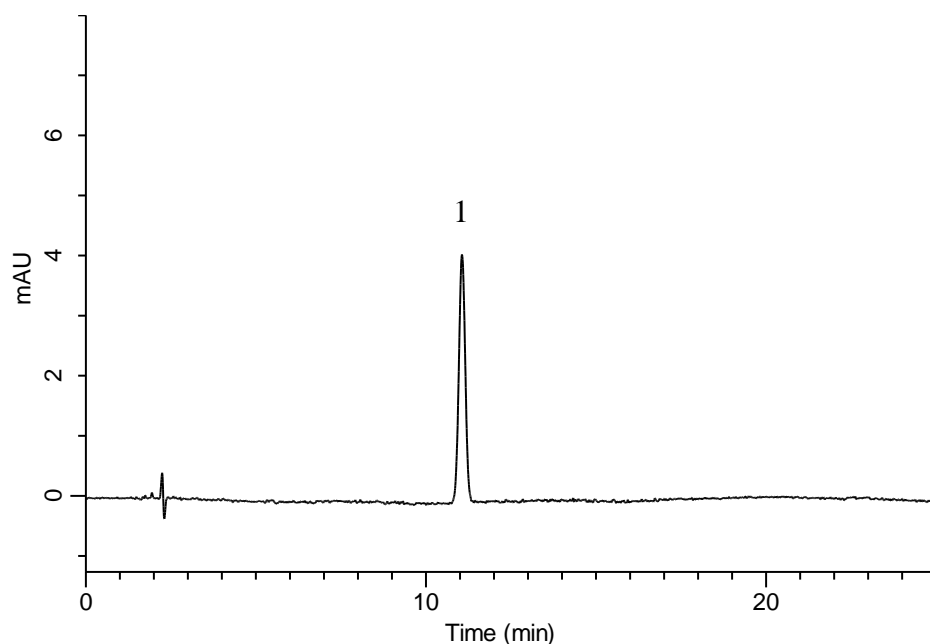


## Analysis of Olopatadine hydrochloride (Under the Condition of the Japanese Pharmacopoeia)



### Conditions

**System** : GL-7400 HPLC system  
**Column** : InertSustain C8  
 (5 $\mu$ m, 250  $\times$  4.6 mm I.D.)  
**Column Cat. No.** : 5020-16028  
**Eluent** : CH<sub>3</sub>CN/50 mM KH<sub>2</sub>PO<sub>4</sub> (pH 3.5, H<sub>3</sub>PO<sub>4</sub>) = 9/11, v/v  
 + 2.3 g/L IPCC-12A  
 (IPCC-12A : Sodium 1-Dodecylsulfate)  
**Flow Rate** : 1.1 mL/min  
**Col. Temp.** : 40 °C  
**Detection** : UV 299 nm (GL-7452 PDA Detector)  
**Injection Vol.** : 20  $\mu$ L

### Analyte:

1. Olopatadine hydrochloride 5 mg/L

Theoretical plates : 16272  $\geq$  8000  
 Tailing factor : 1.02  $\leq$  2.0  
 RSD of the  
 peak area (%) : 1.19  $\leq$  2.0 (n=6)