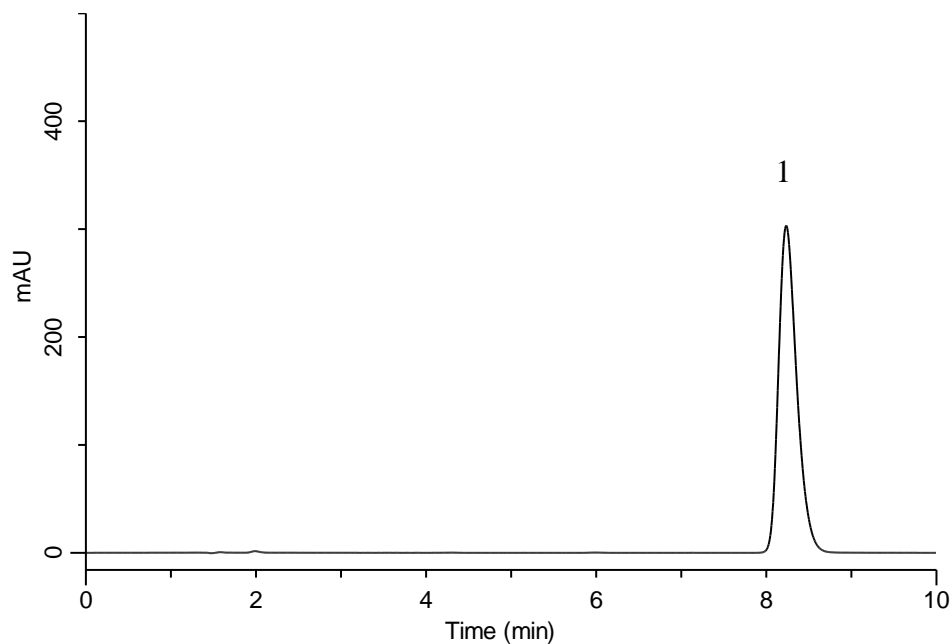


## Analysis of Olmesartan medoxomil



### Conditions

**System** : GL-7400 HPLC system  
**Column** : InertSustain C18  
(5 $\mu$ m, 150  $\times$  4.6 mm I.D.)  
**Column Cat. No.** : 5020-07345  
**Eluent** : A) CH<sub>3</sub>CN  
B) 0.1 % CH<sub>3</sub>COOH in H<sub>2</sub>O  
A/B = 40/60, v/v  
**Flow Rate** : 1.0 mL/min  
**Col. Temp.** : 25 °C  
**Detection** : UV 254 nm (GL-7452 PDA Detector)  
**Injection Vol.** : 20  $\mu$ L

### Analyte:

1. Olmesartan medoxomil 100 mg/L