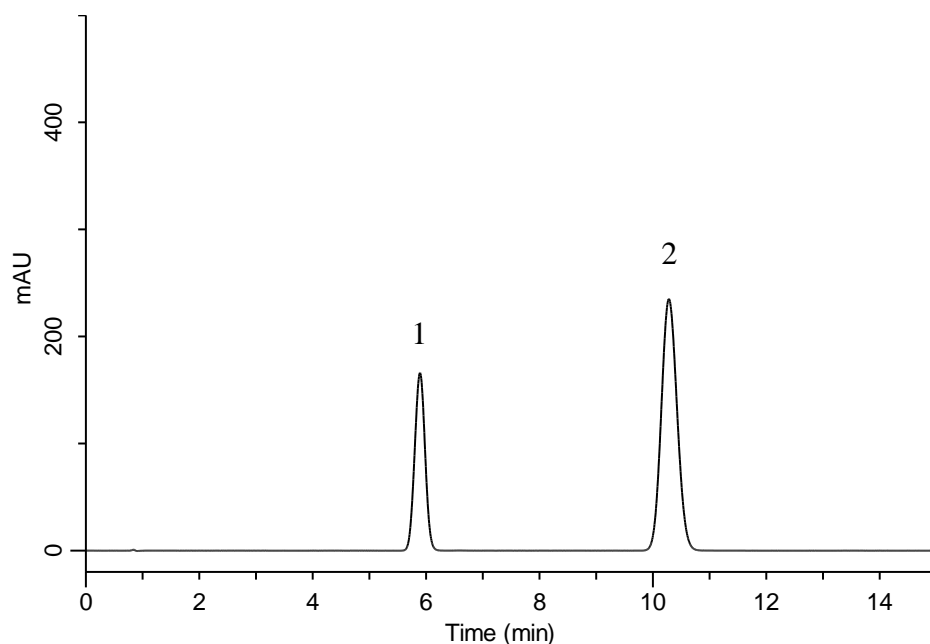


## Analysis of Ipriflavone

(Under the Condition of the Japanese Pharmacopoeia)



### Conditions

**System** : GL-7400 HPLC system  
**Column** : InertSustain C8  
 (5 $\mu$ m, 150 x 4.0 mm I.D.)  
**Column Cat. No.** : 5020-16020  
**Eluent** : A) CH<sub>3</sub>CN  
 B) H<sub>2</sub>O  
 A/B = 60/40, v/v  
**Flow Rate** : 1.1 mL/min  
**Col. Temp.** : 25 °C  
**Detection** : UV 280 nm (GL-7452 PDA Detector)  
**Injection Vol.** : 20  $\mu$ L  
**Sample** : Standard

### Analyte:

1. Ipriflavone 60 mg/L  
 2. Di-*n*-butyl phthalate 1050 mg/L

Resolution (1, 2) : 10.3 ( $\geq 3$ )  
 RSD of the peak  
 area ratio of  
 1 to 2 (%) (n=6) : 0.07 ( $\leq 1.0$ )