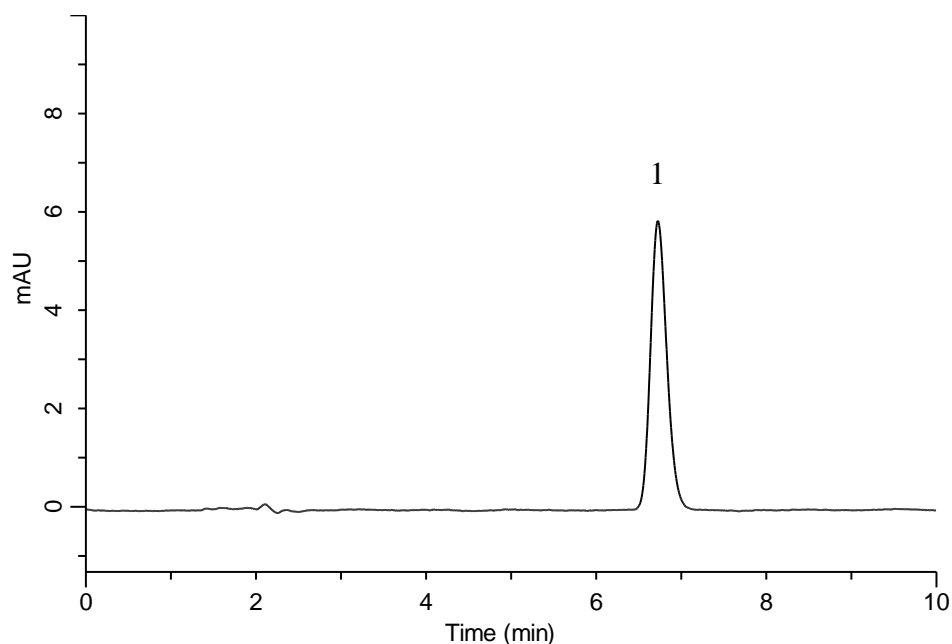


Analysis of Etizolam

(Under the Condition of the Japanese Pharmacopoeia, Etizolam Tablets)



Conditions

System : GL-7400 HPLC system
Column : Inertsil ODS-3
 (5 μ m, 150 x 4.6 mm I.D.)
Column Cat. No. : 5020-01731
Eluent : A) CH₃CN
 B) H₂O
 A/B = 50/50, v/v
Flow Rate : 0.65 mL/min
Col. Temp. : 30 °C
Detection : UV 243 nm (GL-7452 PDA Detector)
Injection Vol. : 100 μ L
Sample : Standard

Analyte:

1. Etizolam 140 μ g/L

Theoretical plates : 5,901 (\geq 3,000)
 Tailing factor : 1.19 (\leq 2.0)
 RSD of the
 peak area (%) (n=6) : 0.48 (\leq 2.0)