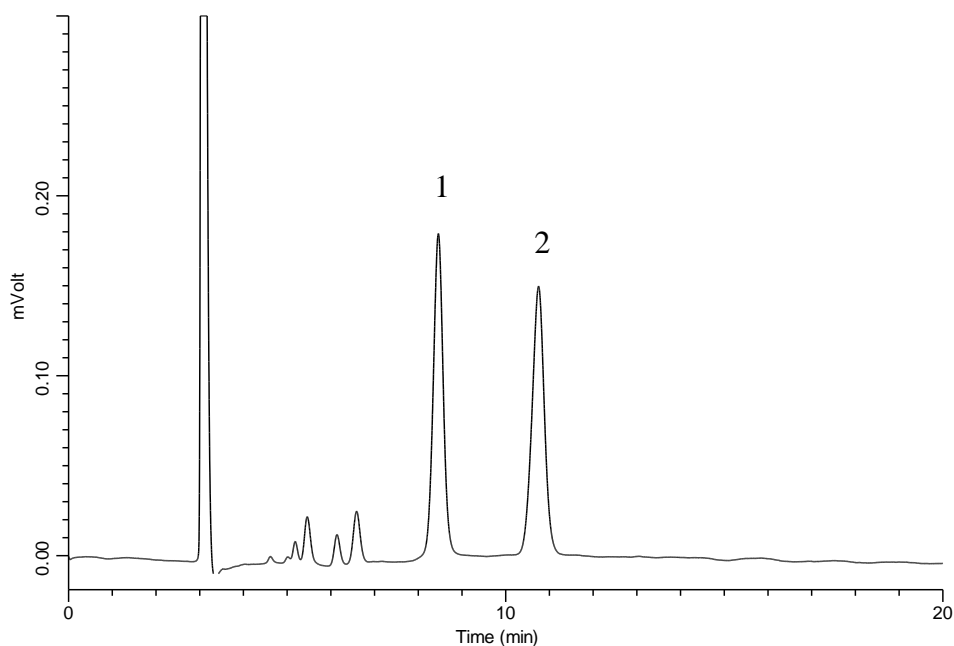


## Analysis of Acarbose



### Conditions

**Column** : InertSustain NH<sub>2</sub>  
(5 μm, 250 x 4.6 mm I.D.)

**Column Cat. No.** : 5020-16628

**Eluent** : A) CH<sub>3</sub>CN  
B) H<sub>2</sub>O  
A/B = 70/30, v/v

**Flow Rate** : 1.0 mL/min

**Col. Temp.** : 40 °C

**Detection** : RI

**Injection Vol.** : 5 μL

**Sample** : Standard

### Analyte:

1. Acarbose
2. Stachyose