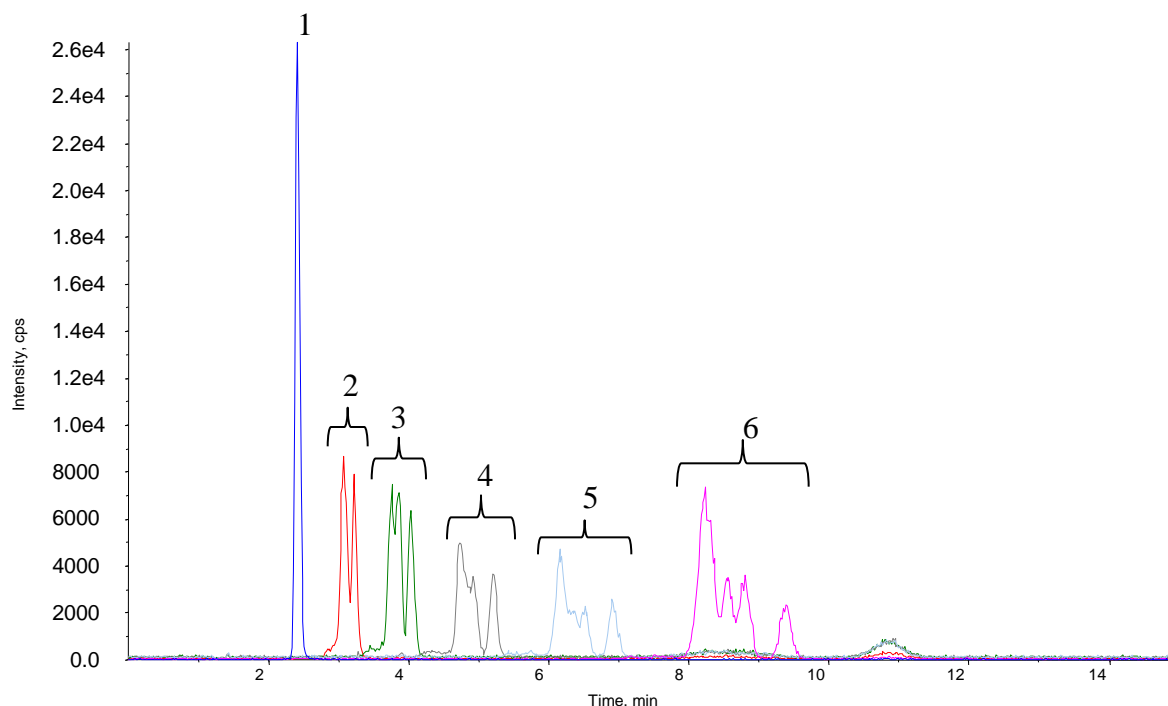


Analysis of Linear alkylbenzene sulfonate



Conditions

System	: LC800 HPLC System 4000 QTRAP®
Column	: InertSustain C18 HP (3 μ m, 150 \times 2.1 mm I.D.)
Column Cat. No.	: 5020-14415
Eluent	: A) CH ₃ CN B) 0.1 % HCOOH + 50 mM HCOONH ₄ in H ₂ O A/B = 65/35, v/v
Flow Rate	: 0.2 mL/min.
Col. Temp.	: 40 °C
Detection	: LC/MS/MS (4000 QTRAP® ESI, Negative, MRM) CUR CAD IS TEM GS1 GS2 10 4 -4500 600 70 40
Injection Vol.	: 5 μ L

Analyte:

1. Sodium Octylbenzenesulfonate(C8) (I.S.)
 2. Sodium Decylbenzenesulfonate(C10)
 3. Sodium Undecylbenzenesulfonate(C11)
 4. Sodium Dodecylbenzenesulfonate(C12)
 5. Sodium Tridecylbenzenesulfonate(C13)
 6. Sodium Tetradecylbenzenesulfonate(C14)
- in CH₃CN/H₂O = 65/35, v/v
each 5 μ g/L