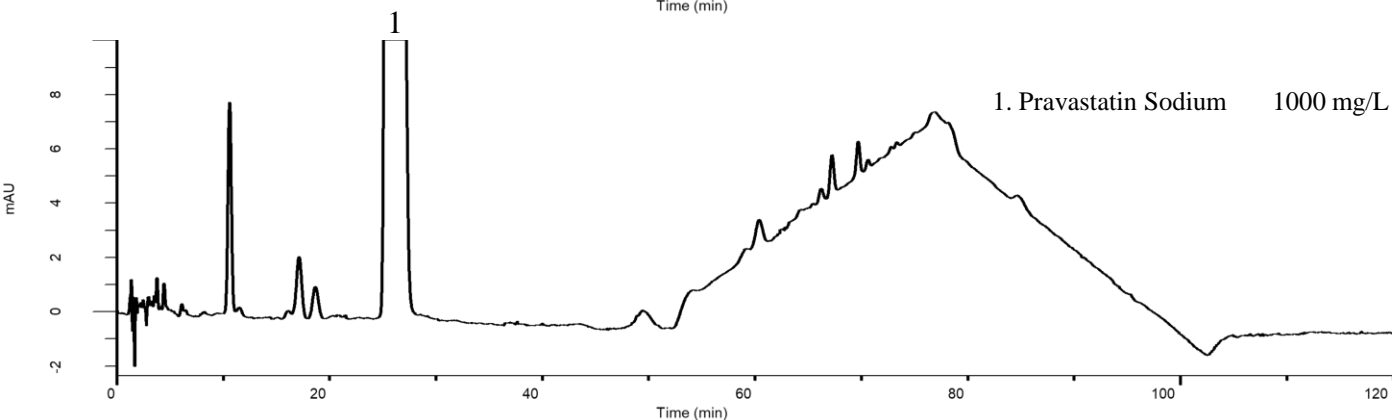
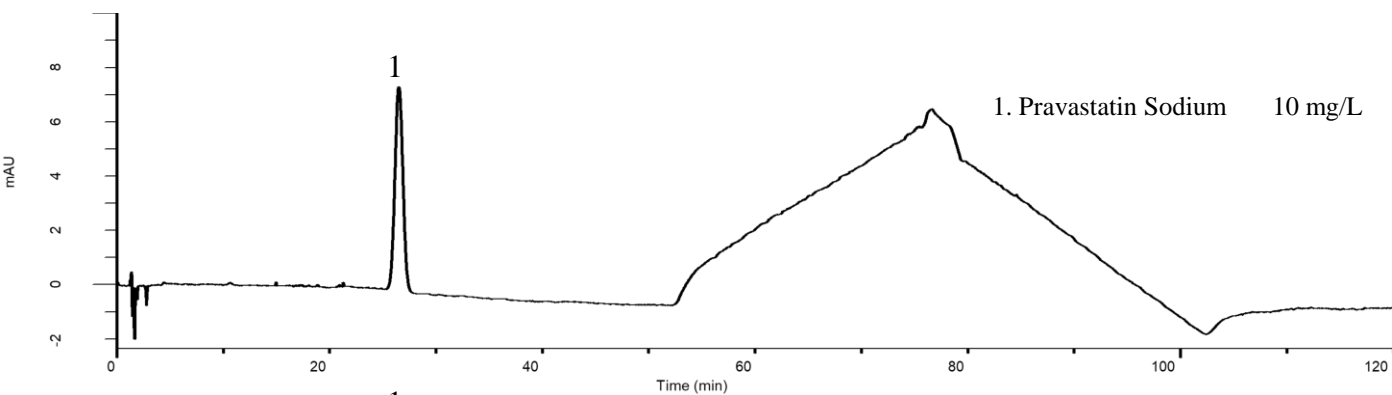


Analysis of Pravastatin Sodium

(Under the Condition of the Japanese Pharmacopoeia, Pravastatin Sodium Tablets)



Conditions

System : GL-7400 HPLC system

Column : Inertsil ODS-4
(5 μ m, 150 x 4.6 mm I.D.)

Column Cat. No. : 5020-03945

Eluent : A) H₂O/CH₃OH/CH₃COOH/Triethylamine = 750/250/1/1, v/v/v/v
B) CH₃OH/H₂O/CH₃COOH/Triethylamine = 650/350/1/1, v/v/v/v

Time(min)	A(vol%)	B(vol%)
0~50	50	50
50~75	50→0	50→100

Analyte:

1. Pravastatin Sodium

Flow Rate : 1.3 mL/min

Col. Temp. : 25 °C

Detection : UV 238 nm (GL-7452 PDA Detector)

Injection Vol. : 20 μ L

Sample : Standard

Theoretical plates : 5,826 (\geq 3,500)

Tailing factor : 1.05 (\leq 1.6)

RSD of the peak area (%) (n=6) : 0.58 (\leq 1.5)