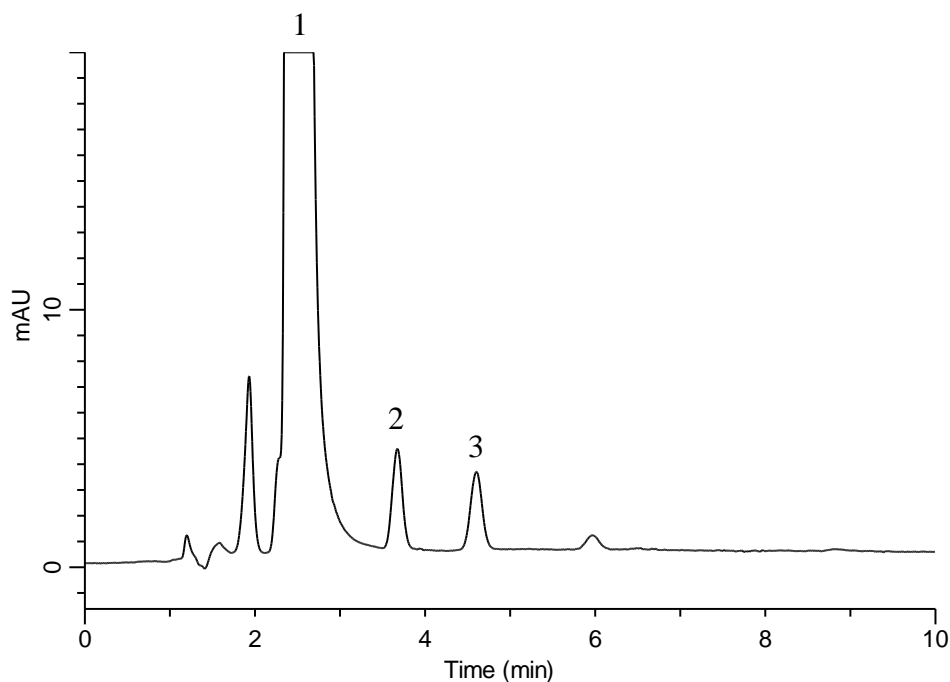


Analysis of 2 kinds of Aldehydes (Under the Condition of the Japanese Pharmacopoeia)



Conditions

System : GL-7400 HPLC system
Column : Inertsil ODS-2
 (5 μ m, 150 x 4.6 mm I.D.)
Column Cat. No. : 5020-01124
Eluent : A) CH₃CN
 B) H₂O
 A/B = 60/40, v/v
Flow Rate : 1.0 mL/min
Col. Temp. : 40 °C
Detection : UV 360 nm (GL-7452 PDA Detector)
Injection Vol. : 20 μ L
Sample : Standard

Analyte:

1. DNPH
 2. DNPH-Formaldehyde 50 μ g/L
 3. DNPH-Acetaldehyde 50 μ g/L