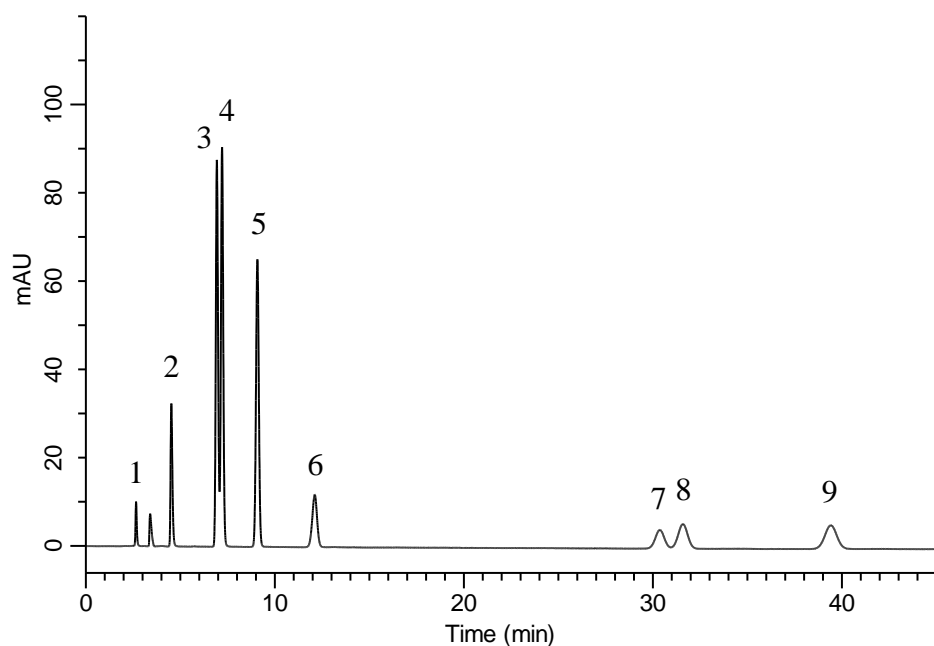


Analysis of Preservatives and Sweetener



Conditions

System : GL-7400 HPLC system
Column : InertSustain C18
 (5 μ m, 250 x 4.6 mm I.D.)
Column Cat. No. : 5020-07346
Eluent : A) CH₃CN
 B) 0.1% H₃PO₄ in H₂O
 A/B = 15/85, v/v
Flow Rate : 1.0 mL/min
Col. Temp. : 40 °C
Detection : UV 210 nm (GL-7452 PDA Detector)
Injection Vol. : 10 μ L
Sample : Standard

Analyte:

1. Ascorbic acid	10 mg/L
2. Acesulfame potassium	10 mg/L
3. Saccharin sodium	10 mg/L
4. Caffeine	10 mg/L
5. <i>p</i> -Hydroxybenzoic acid	10 mg/L
6. Aspartame	10 mg/L
7. Sorbic acid	10 mg/L
8. Benzoic acid	10 mg/L
9. Dehydroacetic acid	10 mg/L