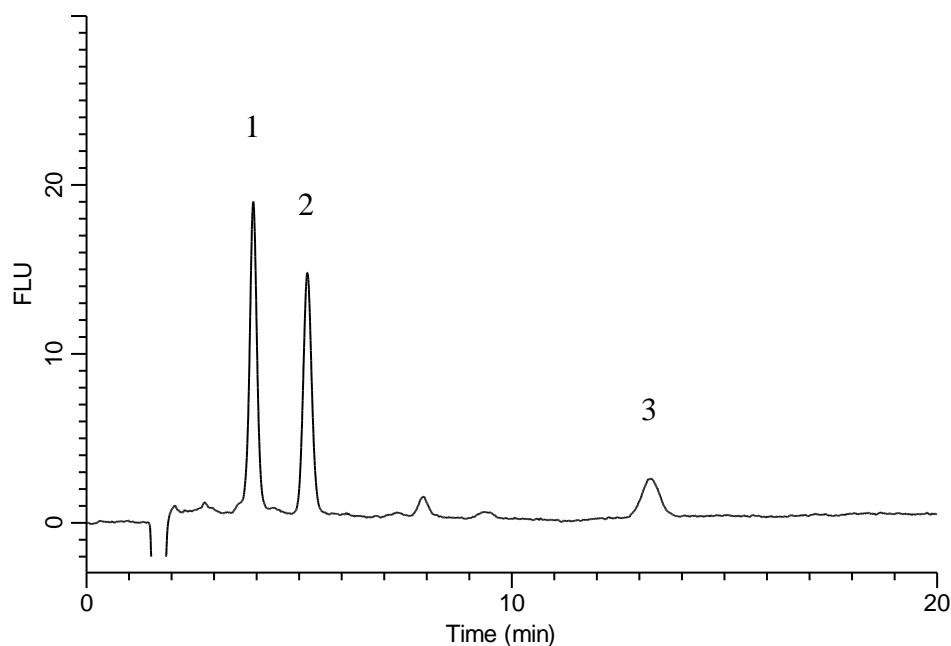


Analysis of Tetracyclines



Conditions

System : GL-7400 HPLC system
Column : InertSustain C18
 (5 μ m, 150 x 4.6 mm I.D.)
Column Cat. No. : 5020-07345
Eluent : A) Imidazole buffer*
 B) CH₃OH
 A/B = 80/20, v/v
Flow Rate : 1.0 mL/min
Col. Temp. : 40 °C
Detection : FL Ex 380 nm Em 520 nm
Injection Vol. : 20 μ L

Analyte:

1. Oxytetracycline	1 mg/L
2. Tetracycline	1 mg/L
3. Chlortetracycline	1 mg/L

* Imidazole buffer :

Dissolve 68.08 g of imidazole, 0.37 g of disodium ethylenediaminetetraacetate and 10.72 g of magnesium acetate in 800mL of H₂O.

Adjust to pH 7.2 with acetic acid and dilute this solution to 1,000 mL with H₂O.