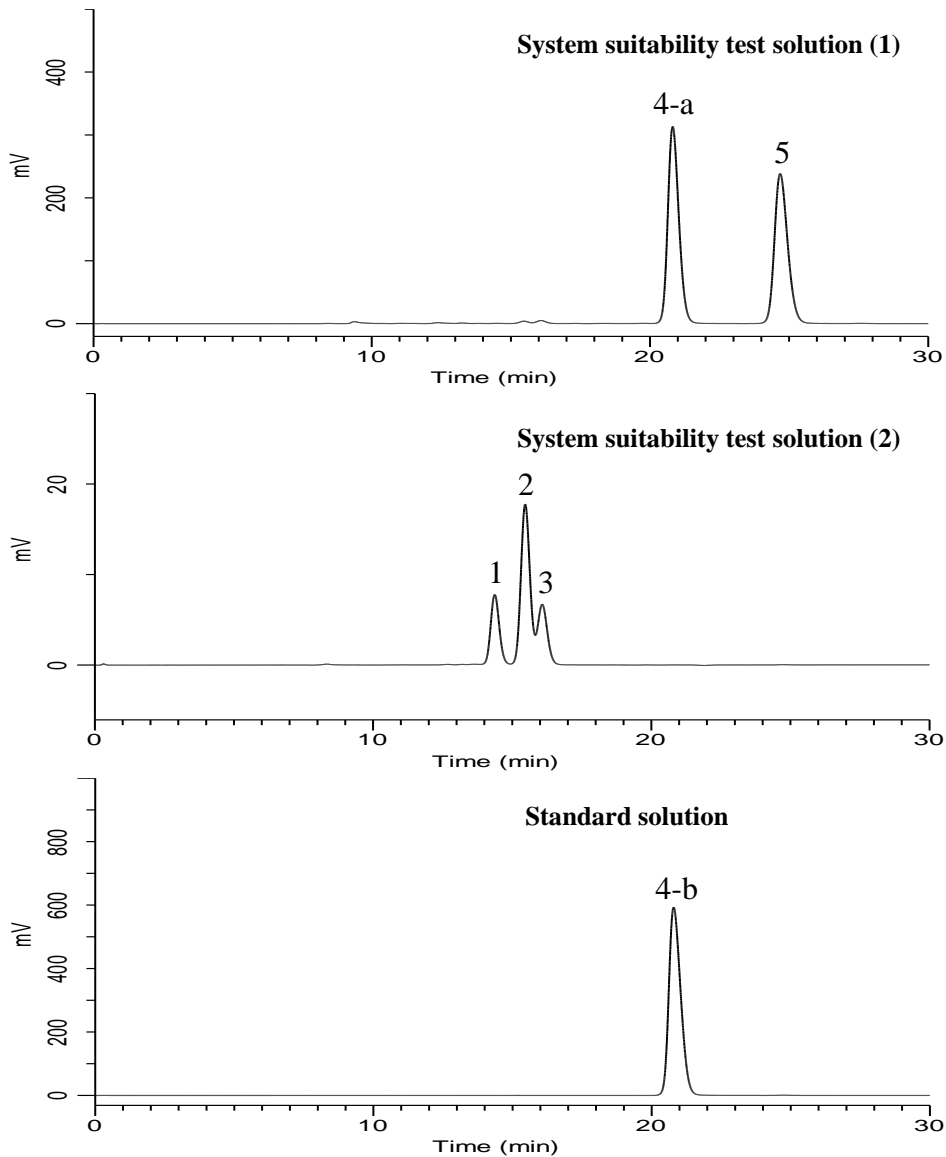


## Analysis of D-Mannitol



### Conditions

**System** : GL7700 HPLC system  
**Column** : HC-75 (Ca<sup>2+</sup>)  
 (9 μm, 300 x 7.8 mm I.D.)  
**Column Cat. No.** : 7845-79642  
**Eluent** : H<sub>2</sub>O  
**Flow Rate** : 0.5 mL/min  
**Col. Temp.** : 85 °C  
**Detection** : RI (40 °C, RI7754 RI Detector)  
**Injection Vol.** : 20 μL  
**Sample** : Standard

### Analyte:

1,3. Isomalt  
 2. Maltitol  
 4. D-Mannitol  
 5. D-Sorbitol

Relative retention time (1 to 4-a) : 0.69 (about 0.6)  
 Relative retention time (2 to 4-a) : 0.74 (about 0.69)  
 Relative retention time (3 to 4-a) : 0.77 (about 0.73)  
 Relative retention time (5 to 4-a) : 1.19 (about 1.2)

Resolution (4-a, 5) : 4.90 (≥ 2.0)  
 RSD of the peak  
 area 4-b (%) (n=6) : 0.10 (≤ 1.0)