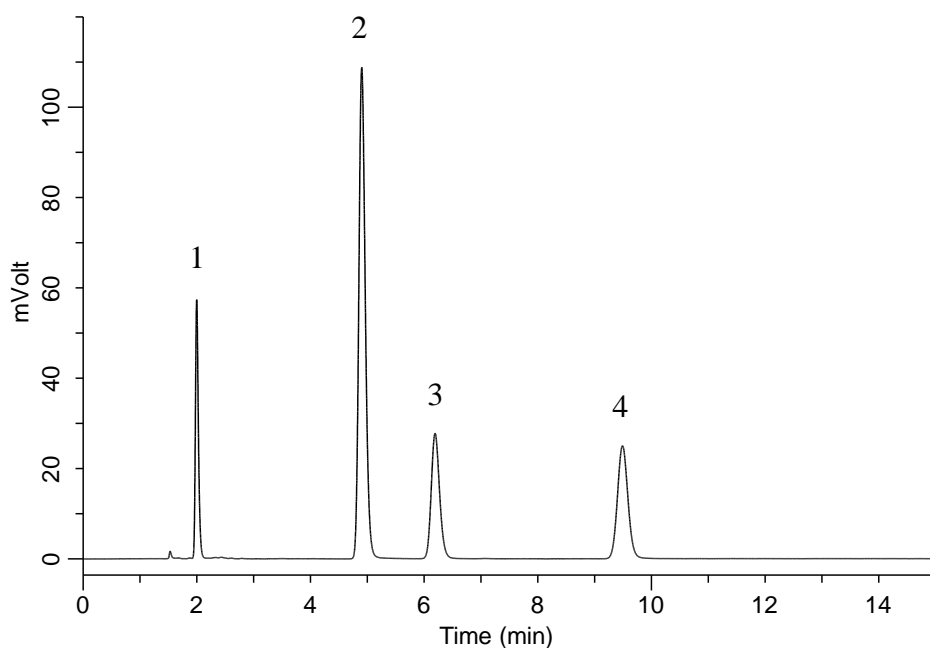


## Analysis of $\beta$ -blocker



### Conditions

**System** : LC800 HPLC system  
**Column** : InertSustain Phenylhexyl  
 (5  $\mu$  m, 150 x 4.6 mm I.D.)  
**Column Cat. No.** : 5020-89026  
**Eluent** : A) CH<sub>3</sub>CN  
 B) 25 mM KH<sub>2</sub>PO<sub>4</sub> in H<sub>2</sub>O (pH 7.0, K<sub>2</sub>HPO<sub>4</sub> in H<sub>2</sub>O)  
 A/B = 20/80, v/v  
**Flow Rate** : 1.0 mL/min  
**Col. Temp.** : 40 °C  
**Detection** : UV 220 nm  
**Injection Vol.** : 2  $\mu$  L  
**Sample** : Standard

### Analyte:

1. Atenolol	100 mg/L
2. Pindolol	100 mg/L
3. Acebutolol	100 mg/L
4. Phenol	100 mg/L