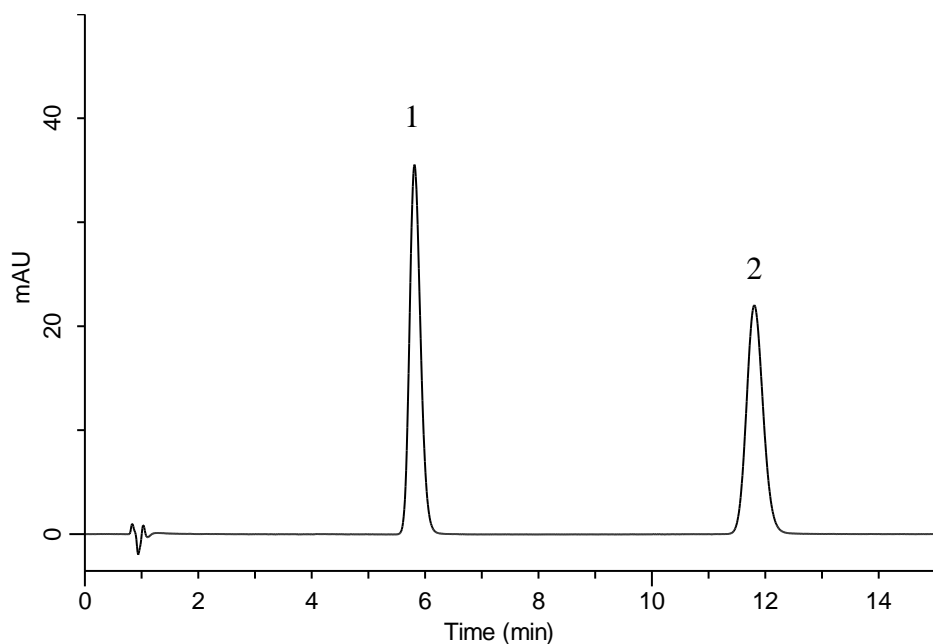


Analysis of Cefalexin

(Under the Condition of the Japanese Pharmacopoeia, Cefalexin Combination Granules)



Conditions

System : GL7700 HPLC system
Column : InertSustain C18
 (3 μ m, 75 x 3.0 mm I.D.)
Column Cat. No. : 5020-07423
Eluent : A) CH₃OH
 B) Buffer*
 A/B = 20/80, v/v
Flow Rate : 0.45 mL/min
Col. Temp. : 25 °C
Detection : UV 254 nm (PD7752 PDA Detector)
Injection Vol. : 10 μ L

Analyte:

1. Cefalexin 20 mg/L
 2. *m*-Hydroxyacetophenone 6.6 mg/L

Resolution (1, 2) : 13.4 (≥ 8)
 RSD of the peak
 area ratio of
 1 to 2 (%) (n=5) : 0.12 (≤ 1.0)

* Dissolve 2.72 g of monobasic potassium phosphate in 1000 mL of water. Adjust pH 3.0 by diluted phosphoric acid.