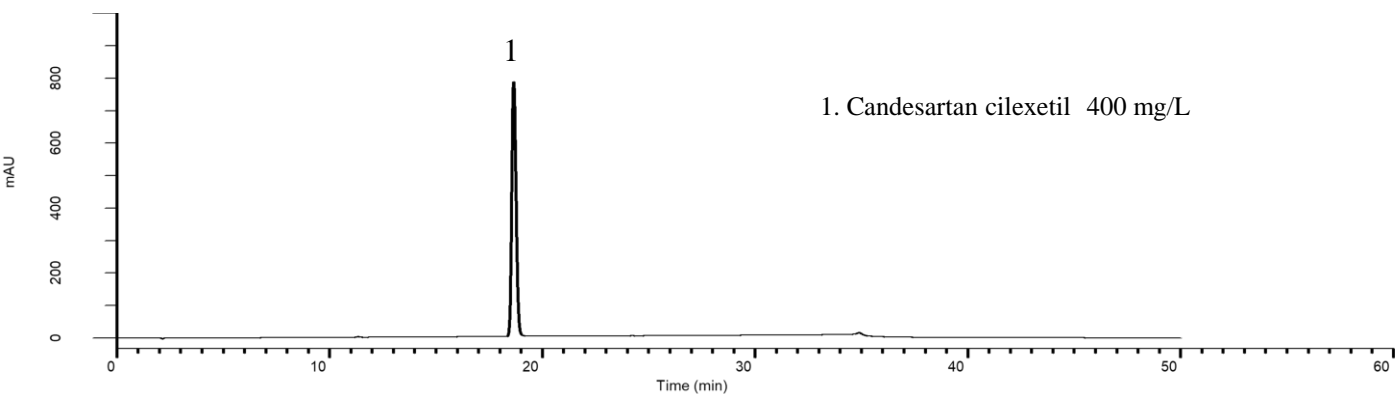
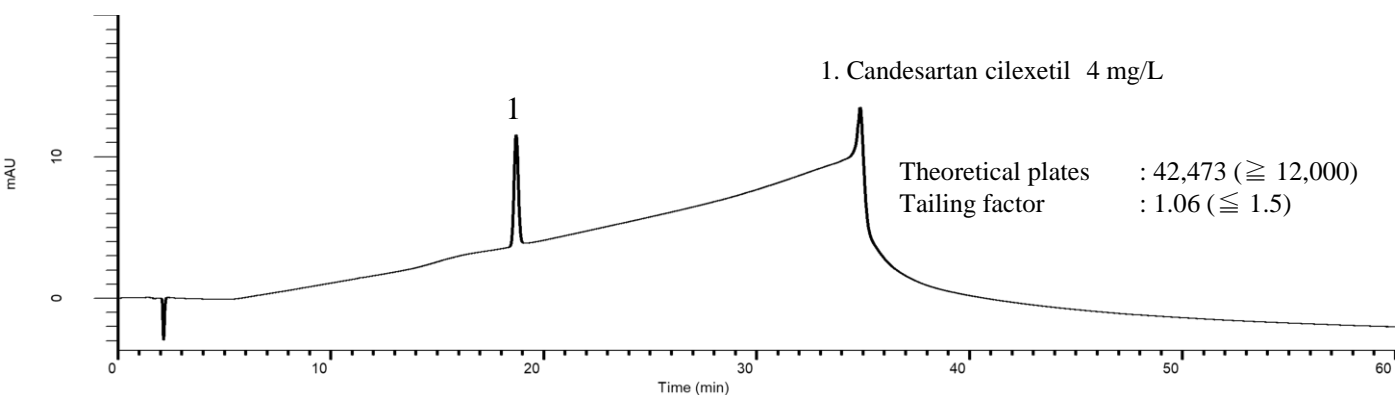


Analysis of Candesartan cilexetil

(Under the Condition of the Japanese Pharmacopoeia,
Candesartan cilexetil and Hydrochlorothiazide Tablets)



Conditions

- System** : GL7700 HPLC system
- Column** : Inertsil ODS-3
(4 μ m, 150 x 4.0 mm I.D.)
- Column Cat. No.** : 5020-04635
- Eluent** : A) CH₃CN/H₂O/CH₃COOH = 57/43/1, v/v/v
B) CH₃CN/H₂O/CH₃COOH = 90/10/1, v/v/v

Time (min)	A (vol%)	B (vol%)
0.0	100	0
30.0	0	100
30.1	100	0
60.0	100	0

- Flow Rate** : 0.6 mL/min
- Col. Temp.** : 25 °C
- Detection** : UV 254 nm (UV7750 UV Detector)
- Injection Vol.** : 10 μ L
- Sample** : Standard

Analyte:

1. Candesartan cilexetil