

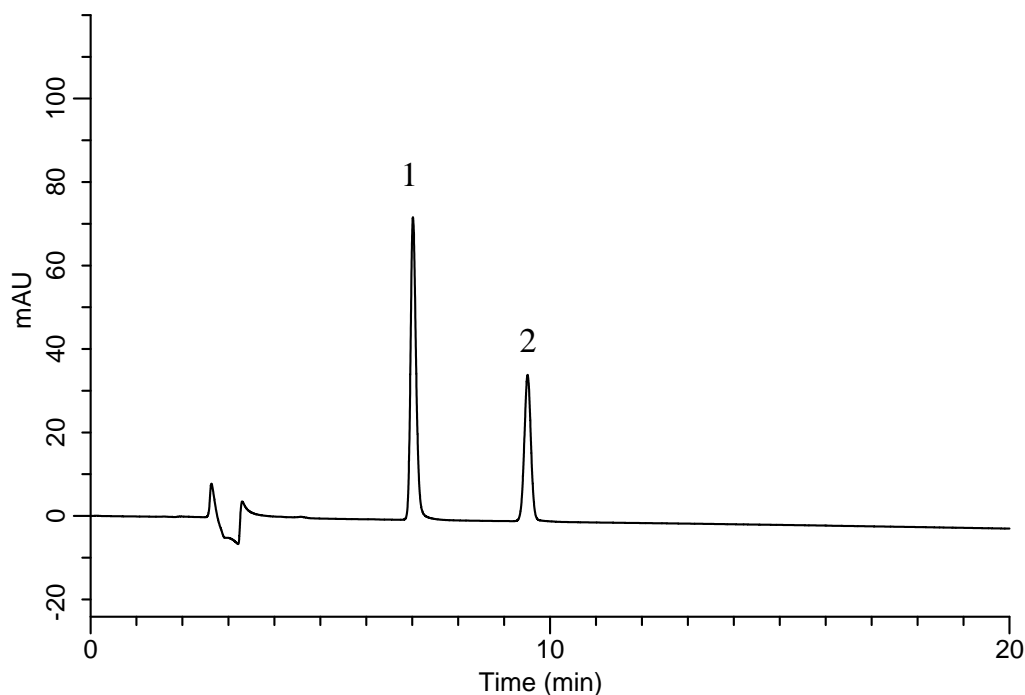
InertSearch™ for LC

Inertsil® Applications

Analysis of Acesulfame potassium

(Under the Condition of the JPE (Japanese Pharmaceutical Excipients))

Data No. LB311-0894



Conditions

System : GL7700 HPLC system
Column : Inertsil ODS-3
(5 μ m, 250 x 4.6 mm I.D.)
Column Cat. No. : 5020-01732
Eluent : A) CH₃CN
B) 10 mM Tetrabutylammonium hydrogensulfate
A/B = 2/3, v/v
Flow Rate : 1.0 mL/min
Col. Temp. : 40 °C
Detection : UV 227 nm (UV7750 UV Detector)
Injection Vol. : 20 μ L
Sample : Standard

Analyte:

1. Acesulfame potassium 10 mg/L
2. *p*-Hydroxybenzoic acid ethyl ester 20 mg/L

Resolution (1, 2) : 10.5 (\geq 4)