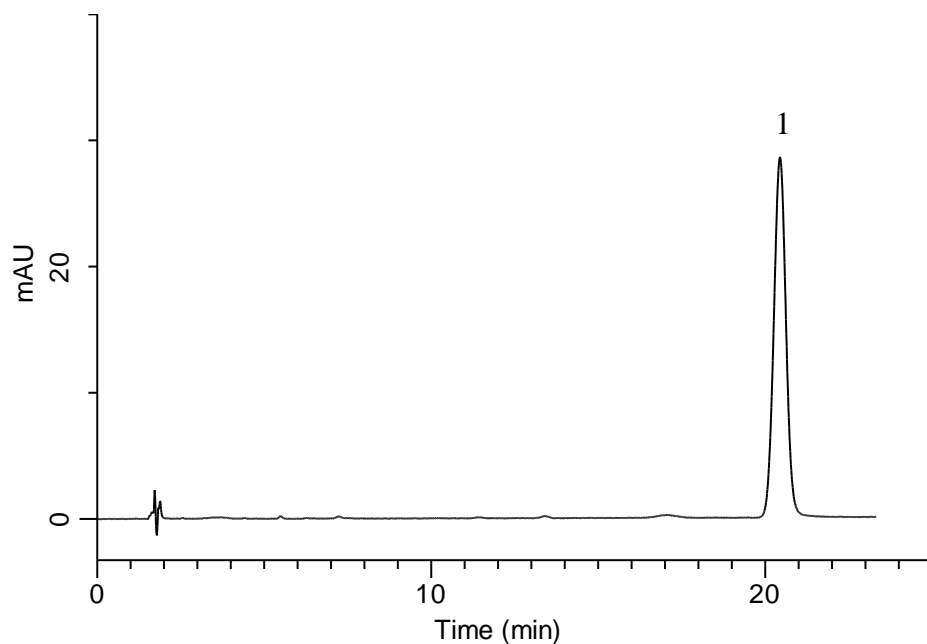


Analysis of *o*-Phthalaldehyde (Directed by Pre-Column Method with DNPH)



Conditions

System : GL7700 HPLC system
Column : InertSustainSwift C18
(5 μ m, 150 x 4.6 mm I.D.)
Column Cat. No. : 5020-88026
Eluent : A) CH₃CN
B) H₂O
A/B = 60/40, v/v
Flow Rate : 1.0 mL/min
Col. Temp. : 40 °C
Detection : UV 360 nm (PD7752 PDA Detector)
Injection Vol. : 5 μ L
Sample : Standard

Analyte:

1. DNPH-*o*-Phthalaldehyde
(10 μ g/mL in CH₃CN/DMSO = 70/30, v/v)