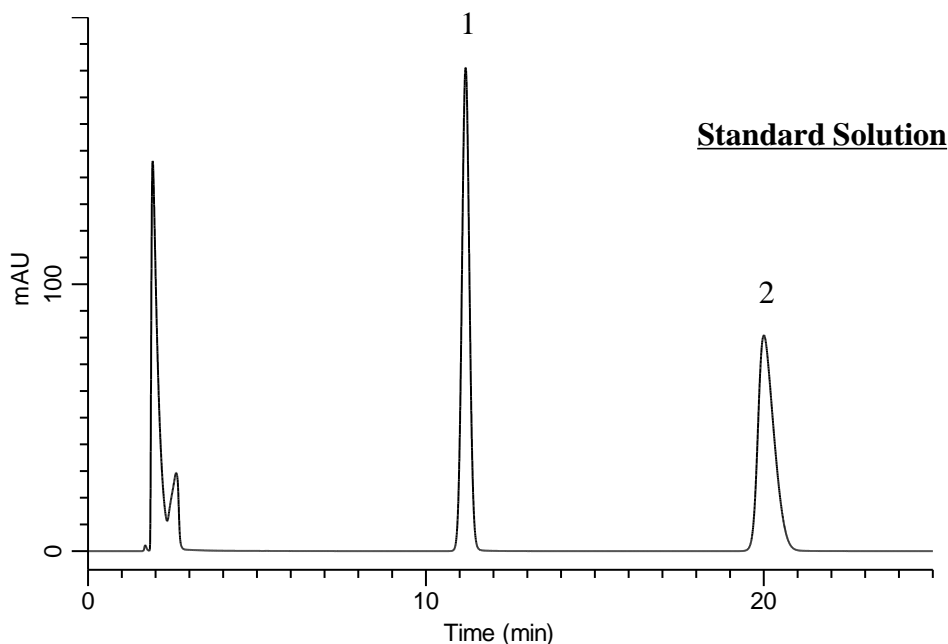


Analysis of Rebamipide

(Under the Condition of the Japanese Pharmacopoeia, Rebamipide Tablets)



Conditions

System : GL7700 HPLC system
Column : InertSustain C18
 (5 μ m, 150 x 4.6 mm I.D.)
Column Cat. No. : 5020-07345
Eluent : A) CH₃CN
 B) Buffer*
 A/B = 17/83, v/v
Flow Rate : 0.91 mL/min
Col. Temp. : 25 °C
Detection : UV 254 nm (UV7750 UV Detector)
Injection Vol. : 20 μ L
Sample : Standard

Analyte:

1. Acetanilide 40 μ g/L
 2. Rebamipide 60 μ g/L

Resolution (1, 2) : 13.8 (\geq 8)
 RSD of the peak
 area ratio of
 2 to 1 (%) (n=6) : 0.13 (\leq 1.0)

*Add 750 mL of water in 300 mL of pH6.2 phosphate buffer**

**Dissolve 9.08 g of potassium dihydrogen phosphate in 1,000 mL of water (Solution A).

Add 1.892 g of disodium hydrogen phosphate in 200 mL of water to 800 mL of Solution A.