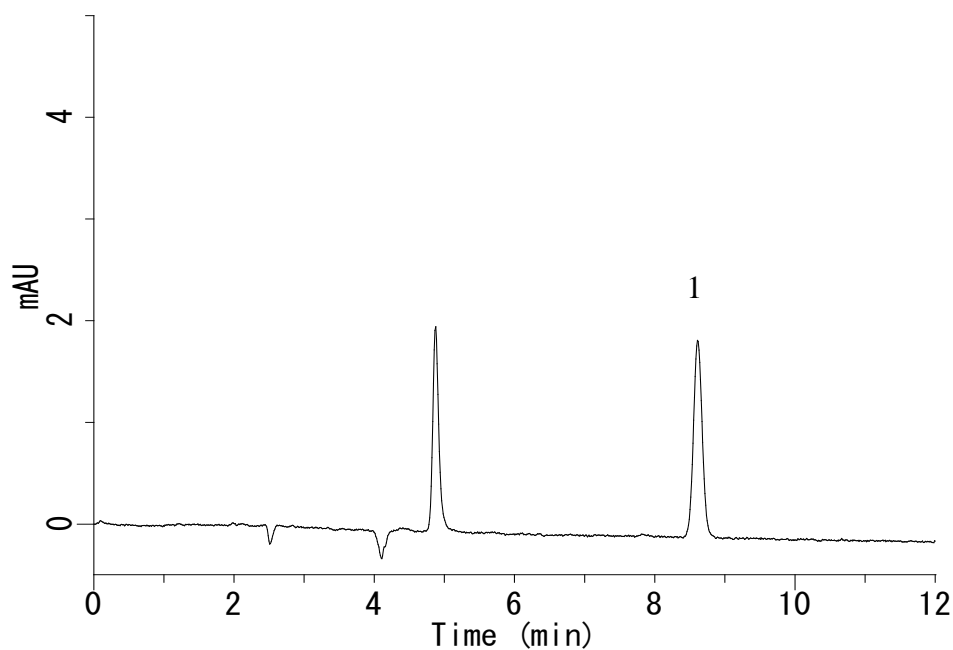


Analysis of Sodium Propionate



Conditions

System : GL7700 HPLC system
Column : Inertsil ODS-3
 (5 μ m, 250 x 4.6 mm I.D.)
Column Cat. No. : 5020-01732
Eluent : Solution*
Flow Rate : 1.0 mL/min
Col. Temp. : 40 °C
Detection : UV 210 nm (PD7752 PDA Detector)
Injection Vol. : 10 μ L
Sample : Standard

Analyte:

1. Sodium Propionate 50 μ g/mL

*Mix 60mL of CH₃CN and 940 mL of H₂O.
Adjust pH 2.5 by H₃PO₄.