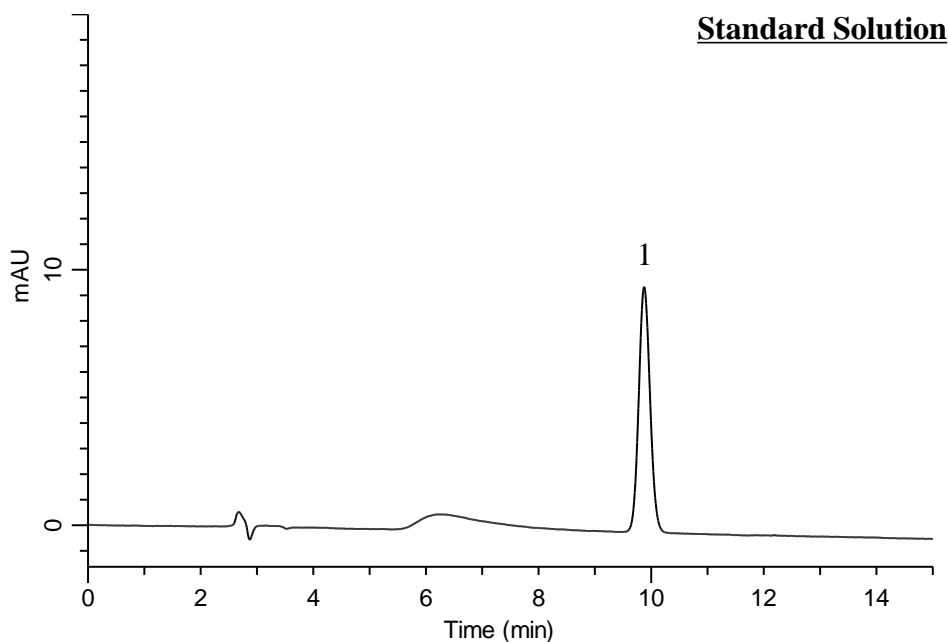


Analysis of Cyclophosphamide

(Under the Condition of the Japanese Pharmacopoeia,
Amlodipine Besilate Orally Disintegrating Tablets)



Conditions

System : GL7700 HPLC system
Column : InertSustainSwift C18
 (5 μ m, 150 x 4.6 mm I.D.)
Column Cat. No. : 5020-88026
Eluent : A) CH₃OH
 B) H₂O
 A/B = 40/60, v/v
Flow Rate : 0.67 mL/min
Col. Temp. : 25 °C
Detection : UV 205 nm (PD7752 PDA Detector)
Injection Vol. : 20 μ L
Sample : Standard

Analyte:

1. Cyclophosphamide 1.06 mg/mL

Theoretical plates : 11,489 (\geq 4,000)
 Tailing factor : 1.06 (\leq 1.5)
 RSD of the
 peak area (%) (n=6) : 0.7 (\leq 1.0)