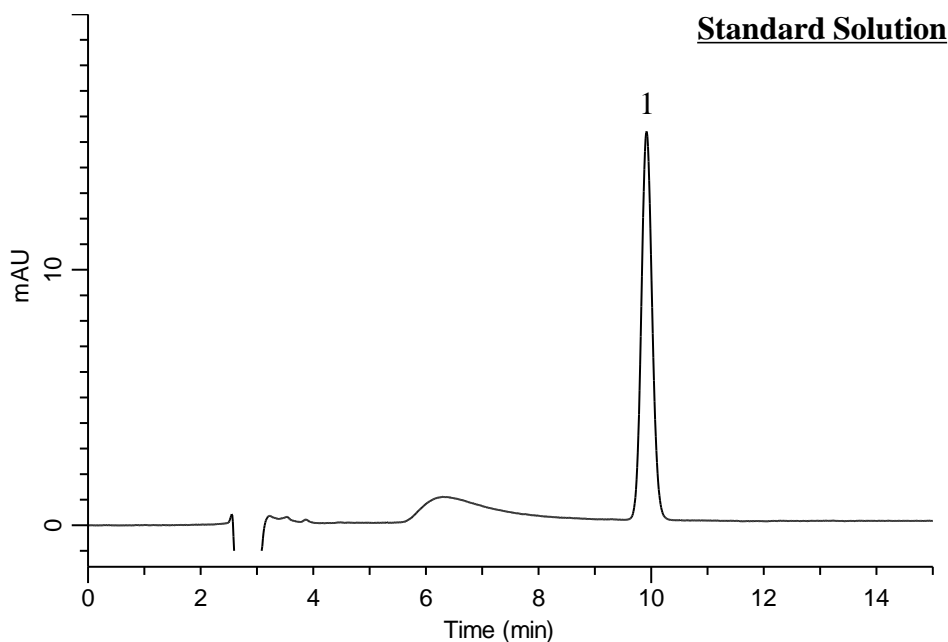


## Analysis of Cyclophosphamide

(Under the Condition of the Japanese Pharmacopoeia, Cyclophosphamide Tablets)



### Conditions

**System** : GL7700 HPLC system  
**Column** : InertSustainSwift C18  
 (5  $\mu$  m, 150 x 4.6 mm I.D.)  
**Column Cat. No.** : 5020-88026  
**Eluent** : A) CH<sub>3</sub>OH  
 B) H<sub>2</sub>O  
 A/B = 40/60, v/v  
**Flow Rate** : 0.67 mL/min  
**Col. Temp.** : 25 °C  
**Detection** : UV 205 nm (PD7752 PDA Detector)  
**Injection Vol.** : 50  $\mu$  L  
**Sample** : Standard

### Analyte:

1. Cyclophosphamide 0.06 mg/mL

Theoretical plates : 12,808 ( $\geq$  5,000)  
 Tailing factor : 1.07 ( $\leq$  1.5)  
 RSD of the  
 peak area (%) (n=6) : 0.29 ( $\leq$  2.0)