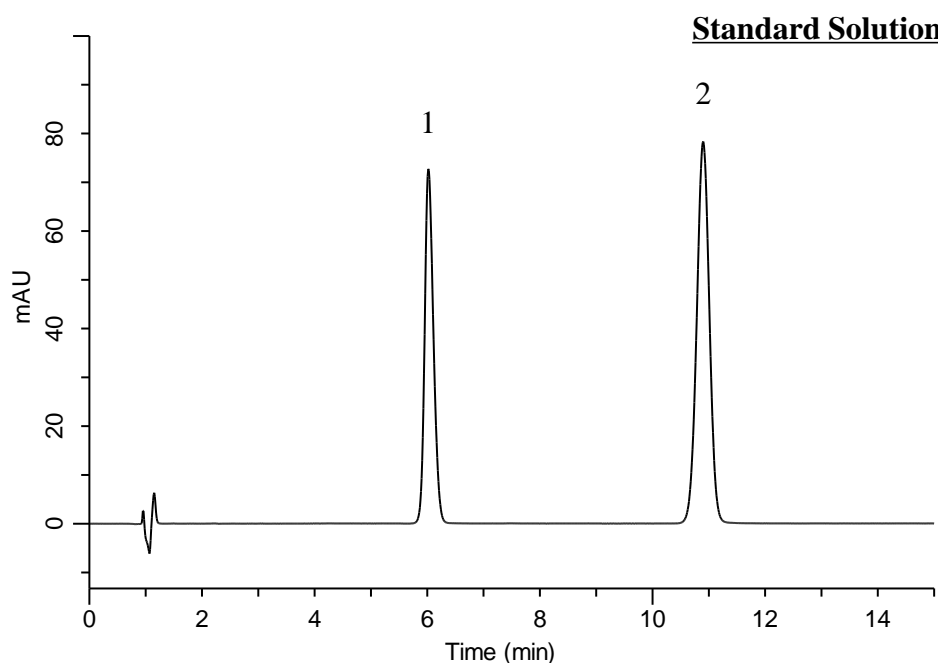


Analysis of Lidocaine



Conditions

System : GL7700 HPLC system
Column : InertSustain C18
 (5 μ m, 150 x 4.0 mm I.D.)
Column Cat. No. : 5020-07335
Eluent : A) CH₃CN
 B) Buffer*
 A/B = 45/55, v/v + 2.88 g/L Sodium lauryl sulfate
Flow Rate : 1.1 mL/min
Col. Temp. : 27 °C
Detection : UV 254 nm (PD7752 PDA Detector)
Injection Vol. : 5 μ L
Sample : Standard

Analyte:

1. Lidocaine 1.7 mg/mL
 2. Benzophenone 0.05 mg/mL

Resolution (1, 2) : 14.2

* Buffer: Dissolve 3.1 g of sodium dihydrogenphosphate dihydrate in 1,000 mL of water. Adjust pH 3.0 by diluted phosphoric acid.