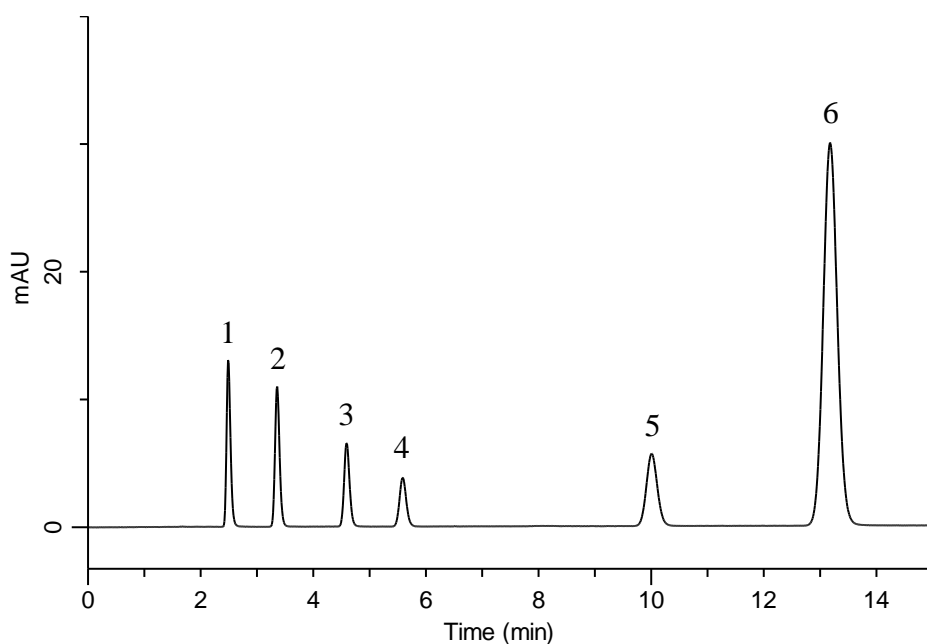


## Analysis of Methacrylic acid



### Conditions

**System** : GL7700 HPLC system  
**Column** : InertSustain C18  
 (5  $\mu$  m, 150 x 4.6 mm I.D.)  
**Column Cat. No.** : 5020-07345  
**Eluent** : A) CH<sub>3</sub>CN  
 B) 0.1 % H<sub>3</sub>PO<sub>4</sub> in H<sub>2</sub>O  
 A/B = 5/95, v/v  
**Flow Rate** : 1.0 mL/min  
**Col. Temp.** : 40 °C  
**Detection** : UV 210 nm (PD7752 PDA Detector)  
**Injection Vol.** : 1  $\mu$  L  
**Sample** : Standard

### Analyte:

1. Maleic acid	10 mg/L
2. Fumaric acid	10 mg/L
3. Acrylic acid	10 mg/L
4. Itaconic acid	10 mg/L
5. Crotonic acid	10 mg/L
6. Methacrylic acid	10 mg/L